

# Recombinant human IDI2 protein

Catalog Number: ATGP1000

## PRODUCT INFORMATION

---

### Expression system

E.coli

### Domain

1-227aa

### UniProt No.

Q9BXS1

### NCBI Accession No.

NP\_150286

### Alternative Names

Isopentenyl-diphosphate delta-isomerase 2, IPPI2

## PRODUCT SPECIFICATION

---

### Molecular Weight

28.9 kDa (247aa) confirmed by MALDI-TOF

### Concentration

1mg/ml (determined by Bradford assay)

### Formulation

Liquid in. 20mM Tris-HCl buffer (pH 8.0) containing 10% glycerol, 1mM DTT, 0.1mM PMSF

### Purity

> 80% by SDS-PAGE

### Tag

His-Tag

### Application

SDS-PAGE

### Storage Condition

Can be stored at +2C to +8C for 1 week. For long term storage, aliquot and store at -20C to -80C. Avoid repeated freezing and thawing cycles.

## BACKGROUND

---

### Description

IDI2, also known as isopentenyl-diphosphate delta-isomerase 2, belongs to the IPP isomerase type 1 family. IDI2 catalyzes the 1, 3-allylic rearrangement of the homoallylic substrate isopentenyl (IPP) to its highly electrophilic allylic isomer, dimethylallyl diphosphate (DMAPP). Recombinant human IDI2 protein, fused to His-tag at N-terminus, was expressed in E. coli and purified by using conventional chromatography.

### Amino acid Sequence

<MGSSHHHHHH SGLVPRGSH> MSDINLDWVD RRQLQRLEEM LIVVDENDKV IGADTKRNCH LNENIEKGLL

## Recombinant human IDI2 protein

Catalog Number: ATGP1000

HRAFSVVLFN TKNRILIQQR SDTKVTFPGY FTDSCTSSHPL YNPAAELEEKD AIGVRRAAQR RLQAELGIPG EQISPEDIVF  
MTIYHHKAKS DRIWGEHEIC YLLLVRKNVT LNPDPSETKS ILYLSQEELW ELLEREARGE VKVTPWLRIT AERFLYRWWP  
HLDDVTPFVE LHKIHRV

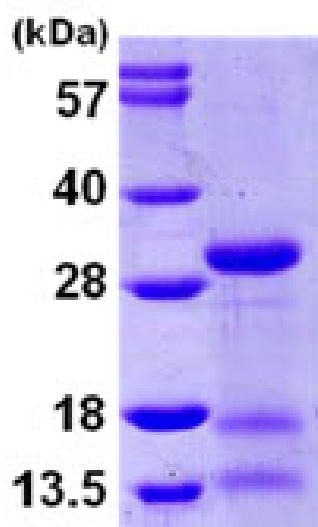
### General References

Clizbe D.B., et al. (2007) Biol Chem. 282:6668-6676

Ota T., et al. (2004) Genet. 36:40-45

## DATA

### SDS-PAGE



3ug by SDS-PAGE under reducing condition and visualized by coomassie blue stain.

15% SDS-PAGE (3ug)