

Recombinant human RhoD protein

Catalog Number: ATGP1002

PRODUCT INFORMATION

Expression system

E.coli

Domain

18-207aa

UniProt No.

O00212

NCBI Accession No.

NP_055393

Alternative Names

Rho-related GTP-binding protein RhoD, ARHD,RHOHP1, RHOM, Ras homolog family member D, Rho-related protein HP1, RhoHP1

PRODUCT SPECIFICATION

Molecular Weight

23.8 kDa (211aa) confirmed by MALDI-TOF

Concentration

0.25mg/ml (determined by Bradford assay)

Formulation

Liquid in. 20mM Tris-HCl buffer (pH 8.0) containing 5mM DTT, 50% glycerol, 200mM NaCl, 2mM EDTA, 0.1mM PMSF

Purity

> 90% by SDS-PAGE

Tag

His-Tag

Application

SDS-PAGE

Storage Condition

Can be stored at +2C to +8C for 1 week. For long term storage, aliquot and store at -20C to -80C. Avoid repeated freezing and thawing cycles.

BACKGROUND

Description

Rho-related GTP-binding protein, also known as RhoD, belongs to the small GTPase superfamily. The small GTPase Rho D contributes to rearrangement of the actin cytoskeleton and cell surface and also governs endosome motility and distribution. Recombinant human RhoD protein, fused to His-tag at N-terminus, was expressed in E. coli and purified by using conventional chromatography techniques.

Recombinant human RhoD protein

Catalog Number: ATGP1002

Amino acid Sequence

MGSSHHHHHH SGLVPRGSH MVKVVLVGDG GCGKTSLLMV FADGAFPEY TPTVFERVMV NLQVKGKPVH
LHIWDTAGQD DYDRLRPLFY PDASVLLLCF DVTSPNSFDN IFNRWYPEVN HFCKKVPIIV VGCKTDLRKD KSLVNKLRRN
GLEPVTYHRG QEMARSVGAV AYLECSARLH DNVHAVFQEA AEVALSSRGR NFWRRITQGF C

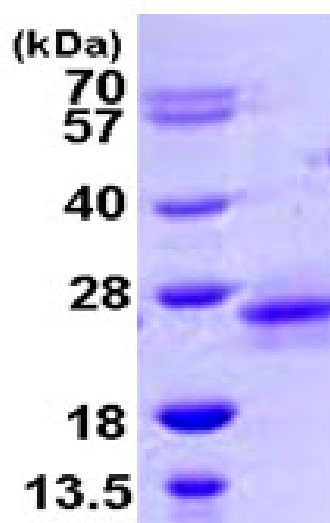
General References

Regnauld, K., et al. (2002) Oncogene. 21: 4020-4031.

Tsubakimoto., et al. (1999) Oncogene. 18: 2431-2440.

DATA

SDS-PAGE



3ug by SDS-PAGE under reducing condition and visualized by coomassie blue stain.

15% SDS-PAGE (3ug)