

Recombinant human RU2AS/KAAG1 protein

Catalog Number: ATGP1004

PRODUCT INFORMATION

Expression system

E.coli

Domain

1-84aa

UniProt No.

Q9UBP8

NCBI Accession No.

NP_851854.1

Alternative Names

Kidney associated antigen 1, Kidney associated DCDC2 antisense RNA 1, RU2, RU2 antisense gene protein, Ru2AS

PRODUCT SPECIFICATION

Molecular Weight

11.1 kDa (104aa) confirmed by MALDI-TOF

Concentration

0.5mg/ml (determined by Absorbance at 280nm)

Formulation

Liquid in. 20mM Tris-HCl buffe (pH 8.0) containing 10% glycerol, 0.1M NaCl

Purity

> 90% by SDS-PAGE

Tag

His-Tag

Application

SDS-PAGE

Storage Condition

Can be stored at +2C to +8C for 1 week. For long term storage, aliquot and store at -20C to -80C. Avoid repeated freezing and thawing cycles.

BACKGROUND

Description

Kidney associated antigen 1, also known as KAAG1, is expressed in testis and kidney, and, at lower levels, in urinary bladder and liver. And it is expressed by a high proportion of tumors of various histologic origin, including melanomas, sarcomas and colorectal carcinomas. Recombinant human KAAG1 protein, fused to His-tag at N-terminus, was expressed in E. coli and purified by using conventional chromatography techniques.

Recombinant human RU2AS/KAAG1 protein

Catalog Number: ATGP1004

Amino acid Sequence

<MGSSHHHHHH SSGLVPRGSH> MDDDAAPRVE GVPVAVHKHA LHDGLRQVAG PGAAAAHLPR WPPPQLAASR
REAPPLSQRP HRTQGAGSPP ETNEKLTNPQ VKEK

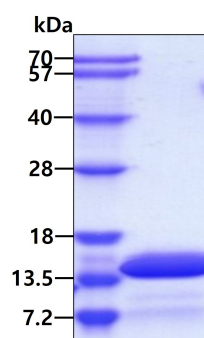
General References

Van den Eynde B.J., et al. (1999) J. Exp. Med. 190:1793-1800

Mungall A.J., et al. (2003) Nature 425:805-811

DATA

SDS-PAGE



3ug by SDS-PAGE under reducing condition and visualized by coomassie blue stain.