

Recombinant E.coli Methionine Aminopeptidase/METAP protein

Catalog Number: ATGP1025

PRODUCT INFORMATION

Expression system

E.coli

Domain

1-264aa

UniProt No.

P0AE18

NCBI Accession No.

NP_414710

Alternative Names

Methionine aminopeptidase., ECK0166, JW0163, pepM

PRODUCT SPECIFICATION

Molecular Weight

31.5 kDa (284aa) confirmed by MALDI-TOF

Concentration

1mg/ml (determined by Bradford assay)

Formulation

Liquid in. 20mM Tris-HCl buffer (pH 8.0) containing 10% glycerol, 2mM DTT

Purity

> 90% by SDS-PAGE

Tag

His-Tag

Application

SDS-PAGE

Storage Condition

Can be stored at +2C to +8C for 1 week. For long term storage, aliquot and store at -20C to -80C. Avoid repeated freezing and thawing cycles.

BACKGROUND

Description

Methionine aminopeptidases, also designated peptidase M proteins, are members of the M24 family of proteins. This protein removes the amino-terminal methionine residue from nascent polypeptides. The active site of map contains two adjacent divalent metal ions connected by a water molecule or hydroxide ion. Recombinant E. coli map protein, fused to His-tag at N-terminus, was expressed in E. coli and purified by using conventional chromatography techniques.

Recombinant E.coli Methionine Aminopeptidase/METAP protein

Catalog Number: ATGP1025

Amino acid Sequence

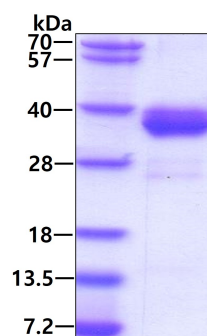
<MGSSHHHHH SSGLVPRGSH> MAISIKTPED IEKMRVAGRL AAEVLEMIEP YVKPGVSTGE LDRICNDYIV NEQHAVSACL
GYHGYPKSVCS INEVVCHG IPDDAKLLKD GDIVNIDVTV IKDGFHGDTS KMFIVGKPTI MGERLCRITQ ESLYLALRMV
KPGINLREIG AAIQKFVEAE GFSVVREYCG HGIGRGFHEE PQVLHYDSRE TNVVLKPGMT FTIEPMVNAG KKEIRTMKDG
WTVKTKDRSL SAQYEHTIVV TDNGCEILTL RKDDTIPAI SHDE

General References

Bernier SG., et al. (2005) J Cell Biochem. 95(6):1191-203.

DATA

SDS-PAGE



3 μ g by SDS-PAGE under reducing condition and visualized by coomassie blue stain.