

# Recombinant human Tau 412 (1N4R)/MAPT protein

Catalog Number: ATGP1030

## PRODUCT INFORMATION

---

**Expression system**

E.coli

**Domain**

1-412aa

**UniProt No.**

P10636

**NCBI Accession No.**

NP\_001116539

**Alternative Names**

microtubule-associated protein tau isoform 5, tau-E, Neurofibrillary tangle protein, Paired helical filament-tau, PHF-tau, G protein beta1/gamma2 subunit-interacting factor 1, protein phosphatase 1 regulatory subunit 103, MTBT1, PPND, FTDP-17, TAU, MSTD, MTBT2, FLJ31424, MGC138549, PPP1R103, tau-40, DDPAC, MAPTL

## PRODUCT SPECIFICATION

---

**Molecular Weight**

45.1 kDa (432aa) confirmed by MALDI-TOF (Molecular weight on SDS-PAGE will appear higher)

**Concentration**

0.5mg/ml (determined by BCA assay)

**Formulation**

Liquid in. 20mM Tris-HCl buffer (pH 8.0) containing 20% glycerol

**Purity**

&gt; 80% by SDS-PAGE

**Tag**

His-Tag

**Application**

SDS-PAGE

**Storage Condition**

Can be stored at +2C to +8C for 1 week. For long term storage, aliquot and store at -20C to -80C. Avoid repeated freezing and thawing cycles.

## BACKGROUND

---

**Description**

Tau, also known as microtubule-associated protein tau (MAPT), is a protein that stabilizes microtubules. It is abundant in neurons in the central nervous system and is less common elsewhere. When this protein is defective, and no longer stabilizes microtubules property, it can result in dementias, such as Alzheimer's disease. Recombinant human Tau protein, fused to His-tag at N-terminus, was expressed in E. coli and purified

# Recombinant human Tau 412 (1N4R)/MAPT protein

Catalog Number: ATGP1030

by using conventional chromatography.

## Amino acid Sequence

<MGSSHHHHHH SSGLVPRGSH> MAEPRQEFEV MEDHAGTYGL GDRKDQGGYT MHQDQEGDTD AGLKESPLQT  
PTEDGSEEPG SETSDAKSTP TAEAEAEAGIG DTPSLEDEAA GHVTQARMVS KSKDGTGSDD KKAKGADGKT KIATPRGAAP  
PGQKGQANAT RIPAKTTPAP KTPSSGEPP KSGDRSGYSS PGSPGTPGSR SRTPSLPTPP TREPKKVAVV RTPPKSPSSA  
KSRLQTAPVP MPDLKNVSK IGSTENLKHQ PGGGKVQIIN KKLDSLNVQS KCGSKDNIKH VPGGGSVQIV YKPVDLSKVT  
SKCGSLGNIH HKPGGGQVEV KSEKLDKDR VQSKIGSLDN ITHVPGGGNK KIETHKLTFR ENAKAKTDHG AEIVYKSPVV  
SGDTSRHLN NVSSTGSIDM VDSPQLATLA DEVSASLAKQ GL

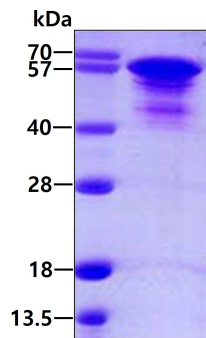
## General References

Cross D., et al. (1993), J Cell Sci. 105 : 51-60.

Lubke u., et al. (1994), Am. J. Pathol. 145: 175-188

## DATA

### SDS-PAGE



3ug by SDS-PAGE under reducing condition and visualized by coomassie blue stain.