

Recombinant e.coli glsA1 protein

Catalog Number: ATGP1053

PRODUCT INFORMATION

Expression system

E.coli

Domain

1-310aa

UniProt No.

P77454

NCBI Accession No.

NP_415018.1

Alternative Names

Glutaminase1, ybaS

PRODUCT SPECIFICATION

Molecular Weight

35.0 kDa (330aa) confirmed by MALDI-TOF

Concentration

1mg/ml (determined by Bradford assay)

Formulation

Liquid in. 20mM Tris-HCl buffer (pH 8.0) containing 1mM DTT, 10% glycerol, 100mM NaCl

Purity

> 95% by SDS-PAGE

Tag

His-Tag

Application

SDS-PAGE

Storage Condition

Can be stored at +2C to +8C for 1 week. For long term storage, aliquot and store at -20C to -80C. Avoid repeated freezing and thawing cycles.

BACKGROUND

Description

GlsA1 (glutaminase1) belongs to the large superfamily of serine-dependent beta-lactamases and penicillin-binding proteins. They are present in most bacteria and eukaryotes and catalyze the hydrolytic deamidation of l-glutamine to l-glutamate and free NH₄⁺. Recombinant E. coli glsA1 protein, fused to His-tag at N-terminus, was expressed in E. coli and purified by using conventional chromatography techniques.

Amino acid Sequence

<MGSSHHHHHH SGLVPRGSH> MLDANKLQQA VDQAYTQFHS LNGGQNADYI PFLANVPGQL AAVAVTCDG

Recombinant e.coli glsA1 protein

Catalog Number: ATGP1053

NVYSAGDSY RFALESISKV CTLALALEDV GPQAVQDKIG ADPTGLPFNS VIALELHGGK PLSPLVNAGA IATTSLINAE
NVEQRWQRIL HIQQQLAGEQ VALSDEVNQS EQTTNFHNRA IAWLLYSAGY LYCDAMEACD VYTRQCSTLL NTIELATLGA
TLAAGGVNPL THKRVLQADN VPYILAEMMM EGLYGRSGDW AYRVGLPGKS GVGGGILAVV PGVMGIAAFS PPLDEDGNSV
RGQKMVASVA KQLGYNVFKG

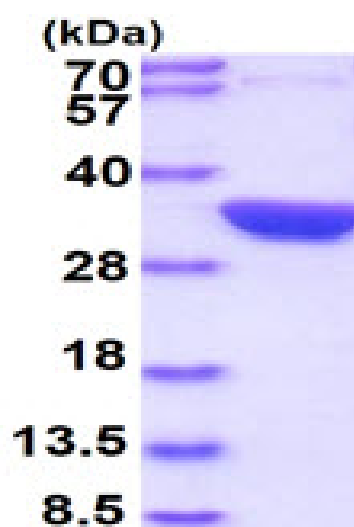
General References

Brown G., et al. (2008) *Biochemistry*. 47(21):5724-35.

Nandakumar R., et al. (2003) *J. Mol. Catal. B: Enzymes*. 23:87-100.

DATA

SDS-PAGE



3ug by SDS-PAGE under reducing condition and visualized by coomassie blue stain.

15% SDS-PAGE (3ug)