

# Recombinant human Prostaglandin E synthase 2/PTGES2 protein

Catalog Number: ATGP1059

## PRODUCT INFORMATION

---

### Expression system

E.coli

### Domain

1-186aa

### UniProt No.

Q9H7Z7

### NCBI Accession No.

NP\_945176

### Alternative Names

Prostaglandin E synthase 2, hCG\_1785478, C9orf15, PGES2, Membrane-associated prostaglandin E synthase-2, Prostaglandin-H(2) E-isomerase

## PRODUCT SPECIFICATION

---

### Molecular Weight

23.5 kDa (206aa) confirmed by MALDI-TOF

### Concentration

0.5mg/ml (determined by Bradford assay)

### Formulation

Liquid in. 20mM Tris-HCl buffer (pH 8.0) containing 20% glycerol, 2mM DTT, 0.2M NaCl, 0.1mM PMSF

### Purity

> 95% by SDS-PAGE

### Tag

His-Tag

### Application

SDS-PAGE

### Storage Condition

Can be stored at +2C to +8C for 1 week. For long term storage, aliquot and store at -20C to -80C. Avoid repeated freezing and thawing cycles.

## BACKGROUND

---

### Description

PTGES2 is a membrane-associated prostaglandin E synthase, which catalyzes the conversion of prostaglandin H2 to prostaglandin E2. This protein also has been shown to activate the transcription regulated by a gamma-interferon-activated transcription element. Recombinant human PTGES2 protein, fused to His-tag at N-terminus, was expressed in E. coli and purified by using conventional chromatography techniques.

# Recombinant human Prostaglandin E synthase 2/PTGES2 protein

Catalog Number: ATGP1059

## Amino acid Sequence

MGSSHHHHHH SSSLVPRGSH MKAVNEQGKE VTEFGNKYWL MLNEKEAQV YGGKEARTEE MKWRQWADDW  
LVHLISPNVY RTPTEALASF DYIVREGKFG AVEGAVAKYM GAAAMYLISK RLKSRHRLQD NVREDLYEAA DKWVAAVGKD  
RPFMGGQKPN LADLAVYGVV RVMEGLDAFD DLMQHTHIQP WYLRVERAIT EASPAH

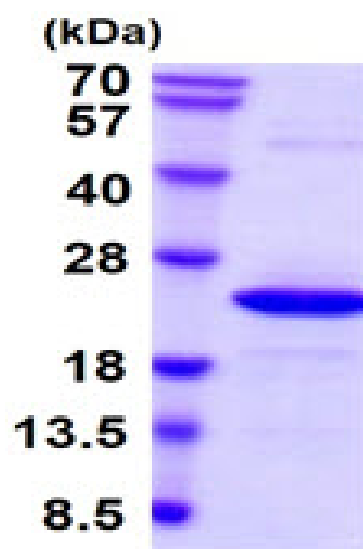
## General References

Murakami M., et al. (2003) J Biol Chem. 278(39):37937-47.

Meng Q., et al. (2005) J Immunol. 174(10):6203-11.

## DATA

### SDS-PAGE



3ug by SDS-PAGE under reducing condition and visualized by coomassie blue stain.

15% SDS-PAGE (3ug)