

Recombinant human CDC26 protein

Catalog Number: ATGP1095

PRODUCT INFORMATION

Expression system

E.coli

Domain

1-85aa

UniProt No.

Q8NHZ8

NCBI Accession No.

NP_644815

Alternative Names

Anaphase-promoting complex subunit CDC26, ANAPC12, APC12

PRODUCT SPECIFICATION

Molecular Weight

11.9 kDa (105aa) confirmed by MALDI-TOF

Concentration

1mg/ml (determined by Bradford assay)

Formulation

Liquid in. 20mM Tris-HCl buffer (pH 8.0) containing 40% glycerol, 0.1M NaCl

Purity

>85% by SDS-PAGE

Tag

His-Tag

Application

SDS-PAGE

Storage Condition

Can be stored at +2C to +8C for 1 week. For long term storage, aliquot and store at -20C to -80C. Avoid repeated freezing and thawing cycles.

BACKGROUND

Description

CDC26, also known as ANAPC12, APC12, belongs to the CDC26 family which orchestrates progression through mitosis by decorating cell-cycle regulators with ubiquitin chains. This protein is component of the anaphase promoting complex/cyclosome (APC/C), a cell cycle-regulated E3 ubiquitin ligase that controls progression through mitosis and the G1 phase of the cell cycle. The APC/C complex acts by mediating ubiquitination and subsequent degradation of target proteins. Recombinant human CDC26 protein, fused to His-tag at N-terminus, was expressed in E. coli and purified by using conventional chromatography.

Recombinant human CDC26 protein

Catalog Number: ATGP1095

Amino acid Sequence

<MGSSHHHHH SSGLVPRGSH> MLRRKPTRLK LKDDIEEFE NIRKDLETRK KQKEDVEVVG GSDGEGAIGL
SSDPKSREQM INDRIGYKPK PKPNNRSSQF GSLEF

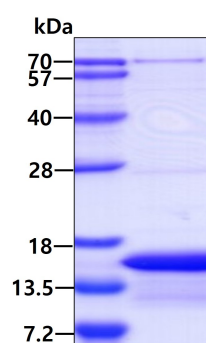
General References

Jin L., et al. (2008) Cell. 133:653-665

Gmachl M., et al. (2000) Proc. Natl. Acad. Sci. u.S.A. 97:8973-8978

DATA

SDS-PAGE



3ug by SDS-PAGE under reducing condition and visualized by coomassie blue stain.