

Recombinant human PPBP/CXCL7 protein

Catalog Number: ATGP1109

PRODUCT INFORMATION

Expression system

E.coli

Domain

35-128aa

UniProt No.

P02775

NCBI Accession No.

NP_002695.1

Alternative Names

Pro-platelet basic protein, Platelet basic protein, PBP, C-X-C motif chemokine 7, Leukocyte-derived growth factor, LDGF, Macrophage-derived growth factor, MDGF, Small-inducible cytokine B7, THBGB1, beta-thromboglobulin, Connective tissue-activating peptide III, Neutrophil-activating peptide-2, SCYB7, TGB, NAP-2-L1, LA-PF4, LDGF, Beta-TG, CTAP3, CXCL7, b-TG1, TGB1, CTAPIII, NAP-2

PRODUCT SPECIFICATION

Molecular Weight

10.3 kDa (95aa) confirmed by MALDI-TOF

Concentration

1mg/ml (determined by BCA assay)

Formulation

Liquid in. Phosphate-Buffered Saline(pH 7.4) containing 10% glycerol

Purity

> 90% by SDS-PAGE

Endotoxin level

< 1 EU per 1ug of protein (determined by LAL method)

Tag

Non-Tagged

Application

SDS-PAGE

Storage Condition

Can be stored at +2C to +8C for 1 week. For long term storage, aliquot and store at -20C to -80C. Avoid repeated freezing and thawing cycles.

BACKGROUND

Description

PPBP, also known as chemokine (C-X-C motif) ligand 7 (CXCL7), is a platelet-derived growth factor that belongs

Recombinant human PPBP/CXCL7 protein

Catalog Number: ATGP1109

to the alpha-chemokine family, It is a protein that is released in large amounts from platelets following their activation. It stimulates various processes including mitogenesis, synthesis of extracellular matrix, glucose metabolism and synthesis of plasminogen activator. Recombinant human PPBP protein was expressed in *E. coli* and purified by using conventional chromatograph.

Amino acid Sequence

MSSTKGQTKR NLAGKKEESL DSDLYAELRC MCIKTTSGIH PKNIQSLEVI GKGTHCNQVE VIATLKDGRK ICLDPDAPRI
KKIVQKLAG DESAD

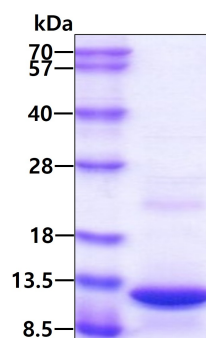
General References

Majumdar S., et al. (1991) *J Biol Chem.* 266:5785-9.

Holt J.C., et al. (1986) *Biochemistry* 25: 1988-1996.

DATA

SDS-PAGE



3ug by SDS-PAGE under reducing condition and visualized by coomassie blue stain.