

# Recombinant human NEDP1/SEN8 protein

Catalog Number: ATGP1112

## PRODUCT INFORMATION

---

**Expression system**

E.coli

**Domain**

1-212aa

**UniProt No.**

Q96LD8

**NCBI Accession No.**

NP\_001159812

**Alternative Names**

SuMO/sentrin specific peptidase family member 8, DEN1, NEDP1, PRSC2

## PRODUCT SPECIFICATION

---

**Molecular Weight**

26.2 kDa (232aa) confirmed by MALDI-TOF

**Concentration**

1mg/ml (determined by Bradford assay)

**Formulation**

Liquid in. 20mM Tris-HCl buffer (pH 8.0) containing 10% glycerol, 1mM DTT, 0.1M NaCl.

**Purity**

&gt; 95% by SDS-PAGE

**Tag**

His-Tag

**Application**

SDS-PAGE

**Storage Condition**

Can be stored at +2C to +8C for 1 week. For long term storage, aliquot and store at -20C to -80C. Avoid repeated freezing and thawing cycles.

## BACKGROUND

---

**Description**

SEN8 is a cysteine protease that is a member of the sentrin-specific protease family. This protein is involved in processing and deconjugation of the ubiquitin-like protein termed, neural precursor cell expressed developmentally downregulated 8 (NEDD8). Recombinant human SEN8 protein, fused to His-tag at N-terminus, was expressed in E. coli and purified by using conventional chromatography techniques.

**Amino acid Sequence**

&lt;MGSSHHHHHH SGLVPRGSH&gt; MDPVLSYMD SLLRQSDVSL LDPPSWLNDH IIGFAFEYFA NSQFHDCSDH

# Recombinant human NEDP1/SEN8 protein

Catalog Number: ATGP1112

VSFISPEVTQ FIKCTSNPAE IAMFLEPLDL PNKRVVFLAI NDNSNQAAGG THWSSLVYLQ DKNSFFHYDS HRSNSVHAK  
QVAEKLEAFL GRKGDKLAFLV EEKAPAQQNS YDCGMYVICN TEALCQNFFR QQTESLLQLL TPAYITKRG EWKDLITTLA KK

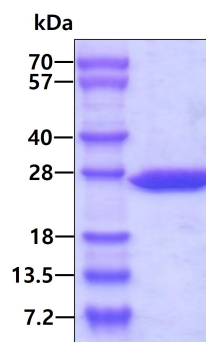
## General References

Reverter D., et al. (2004) Astructure. 12(8):1519-31.

Shen LN., et al. (2005) EMBO J. 24(7):1341-51.

## DATA

### SDS-PAGE



3ug by SDS-PAGE under reducing condition and visualized by coomassie blue stain.