

Recombinant human CBX1 protein

Catalog Number: ATGP1113

PRODUCT INFORMATION

Expression system

E.coli

Domain

1-185aa

UniProt No.

P83916

NCBI Accession No.

NP_006798

Alternative Names

Chromobox protein homolog 1, CBX, HP1-BETA, HP1Hs-beta, HP1Hsbeta, M31, MOD1, p25beta

PRODUCT SPECIFICATION

Molecular Weight

23.6 kDa (205aa) confirmed by MALDI-TOF (Molecular weight on SDS-PAGE will appear higher)

Concentration

1mg/ml (determined by Bradford assay)

Formulation

Liquid in. 20mM Tris-HCl buffer (pH 8.0) containing 20% glycerol, 2mM DTT, 0.1M NaCl.

Purity

> 85% by SDS-PAGE

Tag

His-Tag

Application

SDS-PAGE

Storage Condition

Can be stored at +2C to +8C for 1 week. For long term storage, aliquot and store at -20C to -80C. Avoid repeated freezing and thawing cycles.

BACKGROUND

Description

CBX1 is a member of the heterochromatin protein family and enriched in the heterochromatin and associated with centromeres. It recognizes and binds histone H3 tails methylated at 'Lys-9', leading to epigenetic repression. Interaction with lamin B receptor (LBR) can contribute to the association of the heterochromatin with the inner nuclear membrane. This protein may play an important role in the epigenetic control of chromatin structure and gene expression. Recombinant human CBX1 protein, fused to His-tag at N-terminus, was expressed in E. coli and purified by using conventional chromatography techniques.

Recombinant human CBX1 protein

Catalog Number: ATGP1113

Amino acid Sequence

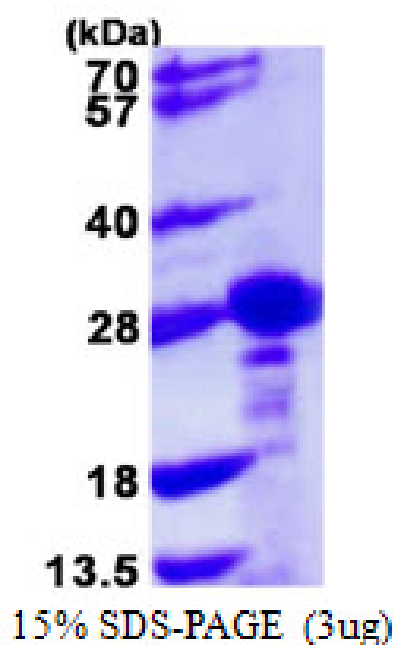
MGSSHHHHHH SSGLVPRGSH MGKKQNKKKV EEVLEEEEE YVVEKVLDRR VVKGKVEYLL KWKGFSDEDN
TWEPEENLDC PDLIAEFLQS QKTAHETDKS EGGKRKADSD SEDKGEESKP KKKKEESEKP RGFARGLEPE RIIGATDSSG
ELMFLMKWKN SDEADLPAK EANVKCPQVV ISFYEERLTW HSYPSEDDDK KDDKN

General References

Furuta K., et al. (1997) Chromosoma. 106(1):11-9.
Minc E., et al. (1999) Chromosoma. 108(4):220-34.

DATA

SDS-PAGE



3ug by SDS-PAGE under reducing condition and visualized by coomassie blue stain.