

# Recombinant human Omentin/ITLN1 protein

Catalog Number: ATGP1125

## PRODUCT INFORMATION

---

### Expression system

E.coli

### Domain

17-313aa

### UniProt No.

Q8WWA0

### NCBI Accession No.

NP\_060095

### Alternative Names

Intelectin-1, Endothelial lectin HL-1, Galactofuranose-binding lectin, Intestinal lactoferrin receptor, Omentin, INTL, ITLN, LFR

## PRODUCT SPECIFICATION

---

### Molecular Weight

33.2 kDa (298aa)

### Concentration

1mg/ml (determined by Bradford assay)

### Formulation

Liquid in. 20mM Tris-HCl buffer (pH 8.0) containing 0.4M urea, 10% glycerol

### Purity

> 90% by SDS-PAGE

### Tag

Non-Tagged

### Application

SDS-PAGE, Denatured

### Storage Condition

Can be stored at +2C to +8C for 1 week. For long term storage, aliquot and store at -20C to -80C. Avoid repeated freezing and thawing cycles.

## BACKGROUND

---

### Description

ITLN1, also known as intelectin1 or omentin, has no effect on basal glucose uptake but enhances insulin-stimulated glucose uptake in adipocytes. ITLN1 may play a role in the defense system against microorganisms and specifically recognize carbohydrate chains of pathogens and bacterial components containing galactofuranosyl residues, in a calcium-dependent manner.

## Recombinant human Omentin/ITLN1 protein

Catalog Number: ATGP1125

### Amino acid Sequence

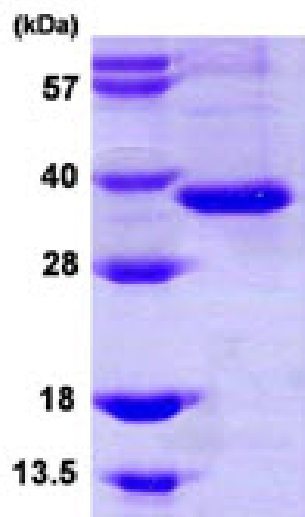
MWSTDEANTY FKEWTCSSSP SLPRSCKEIK DECPSAFDGL YFLRTENGVI YQTFCDMTSG GGGWTLVASV HENDMRGKCT  
VGDRWSSQQG SKAVYPEGDG NWANYNTFGS AEAATSDDYK NPGYYDIQAK DLGIWHVPNK SPMQHWRNSS  
LLRYRTDTGF LQTLGHNLFG IYQKYPVKYG EGKCWTDNGP VIPVVYDFGD AQKTASYSP YGQREFTAGF VQFRVFNNER  
AANALCAGMR VTGCNTEHHC IGGGGYFPEA SPQQCDFSG FDWSGYGTHV GYSSSREITE AAVLLFYR

### General References

Tsuji S., et al. (2001) J. Biol. Chem. 276:23456-23463.  
Tsuji S., et al. (2007) Glycobiology (10):1045-51

## DATA

### SDS-PAGE



3ug by SDS-PAGE under reducing condition and visualized by coomassie blue stain.

15% SDS-PAGE (3ug)