

Recombinant human CUTC protein

Catalog Number: ATGP1181

PRODUCT INFORMATION

Expression system

E.coli

Domain

1-273aa

UniProt No.

Q9NTM9

NCBI Accession No.

NP_057044

Alternative Names

copper homeostasis protein cutC homolog, CGI-32

PRODUCT SPECIFICATION

Molecular Weight

31.5 kDa (293a) confirmed by MALDI-TOF

Concentration

0.5mg/ml (determined by Bradford assay)

Formulation

Liquid in. 20mM Tris-HCl buffer (pH 8.0) containing 5mM DTT, 10% glycerol, 200mM NaCl

Purity

> 95% by SDS-PAGE

Tag

His-Tag

Application

SDS-PAGE

Storage Condition

Can be stored at +2C to +8C for 1 week. For long term storage, aliquot and store at -20C to -80C. Avoid repeated freezing and thawing cycles.

BACKGROUND

Description

CuTC is a member of the Cut family and is suggested to be involved in efflux trafficking of cuprous ion. The Cut family was associated with the copper homeostasis and involved in several important metabolisms, such as uptake, storage, delivery, and efflux of copper. Copper is an essential heavy metal trace element that plays important roles in cell physiology. Recombinant human CuTC protein, fused to His-tag at N-terminus, was expressed in E. coli and purified by using conventional chromatography techniques.

Recombinant human CUTC protein

Catalog Number: ATGP1181

Amino acid Sequence

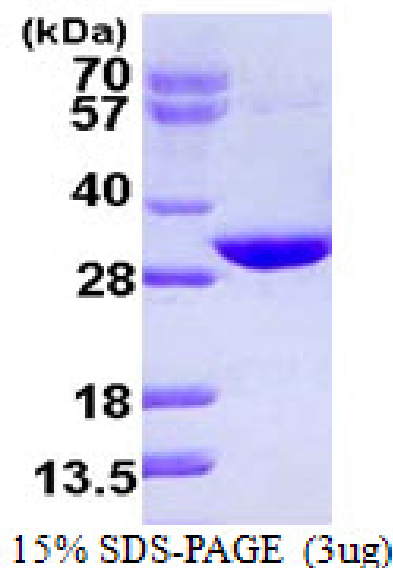
MGSSHHHHHH SSGLVPRGSH MKRQGASSER KRARIPSGKA GAANGFLMEV CVDSVESAVN AERGGADRIE LCSGLSEGGT
TPSMGVLQVV KQSVQIPV FV MIRPRGGDFL YSDREIEVMK ADIRLAKLYG ADGLVFGALT EDGHIDKELC MSLMAICRPL
PVTFHRAFDM VHDPMAALET LLTLGFERVL TSGCDSSALE GLPLIKRLIE QAKGRIVVMP GGGITDRNLQ RILEGSGATE
FHCSARSTRD SGMKFRNSSV AMGASLSCSE YSLKVTDVTK VRTLNAIAKN ILV

General References

Li J., et al. (2005) *Biochem. Biophys. Res. Commun.* 337:179-183
Li Y., et al. (2010) *J. Struct. Biol.* 169:399-405

DATA

SDS-PAGE



3ug by SDS-PAGE under reducing condition and visualized by coomassie blue stain.