

# Recombinant human Cofilin 2/CFL2 protein

Catalog Number: ATGP1183

## PRODUCT INFORMATION

---

### Expression system

E.coli

### Domain

1-166aa

### UniProt No.

Q9Y281

### NCBI Accession No.

NP\_068733

### Alternative Names

CFL2, Cofilin 2, NEM7

## PRODUCT SPECIFICATION

---

### Molecular Weight

20.9 kDa (186a) confirmed by MALDI-TOF

### Concentration

1mg/ml (determined by Bradford assay)

### Formulation

Liquid in. 20mM Tris-HCl buffer (pH 8.0) containing 2mM DTT, 10% glycerol, 50mM NaCl

### Purity

> 90% by SDS-PAGE

### Tag

His-Tag

### Application

SDS-PAGE

### Storage Condition

Can be stored at +2C to +8C for 1 week. For long term storage, aliquot and store at -20C to -80C. Avoid repeated freezing and thawing cycles.

## BACKGROUND

---

### Description

CFL2 protein belongs to the actin-binding proteins ADF family that contains 1 ADF-H domain. Cofilin is a widely distributed intracellular actin-modulating protein that binds and depolymerizes filamentous F-actin and inhibits the polymerization of monomeric G-actin in a pH-dependent manner. Defects in CFL2 are the cause of nemaline myopathy type 7 (NEM7). Recombinant human CFL2 protein, fused to His-tag at N-terminus, was expressed in E. coli and purified by using conventional chromatography techniques.

## Recombinant human Cofilin 2/CFL2 protein

Catalog Number: ATGP1183

### Amino acid Sequence

MGSSHHHHHH SGLVPRGSH MASGVTVNDE VIKVFNDMKV RKSSTQEEIK KRKKAVLFCL SDDKRQIIVE EAKQILVGDI  
GDTVEDPYTS FVKLLPLNDC RYALYDATYE TKESKKEDLV FIFWAPESAP LKSKMIYASS KDAIKKKFTG IKHEWQVNGL  
DDIKDRSTLG EKLGGNVVVS LEGKPL

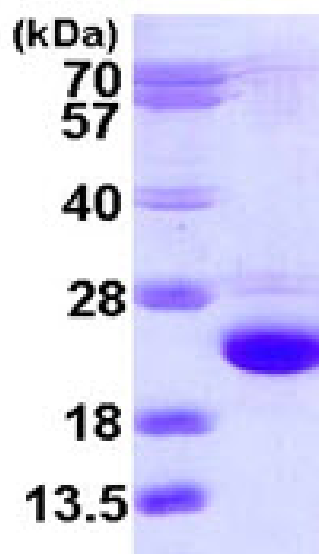
### General References

Agrawal P.B., et al. (2007) Am. J. Hum. Genet. 80:162-167  
Gillett GT, et al. (1996). Ann. Hum. Genet. 60 (Pt 3): 201-11

## DATA

---

### SDS-PAGE



3ug by SDS-PAGE under reducing condition and visualized by coomassie blue stain.

15% SDS-PAGE (3ug)