

# Recombinant human Ephrin-B1 protein

Catalog Number: ATGP1193

## PRODUCT INFORMATION

---

### Expression system

E.coli

### Domain

28-237aa

### UniProt No.

P98172

### NCBI Accession No.

NP\_004420

### Alternative Names

Ephrin B1, EFNB1, EFL-3, ELK ligand, ELK-L, EPH-related receptor tyrosine kinase ligand 2, LERK-2, EPLG2, craniofrontonasal syndrome, CFNS

## PRODUCT SPECIFICATION

---

### Molecular Weight

25.3 kDa (231aa)

### Concentration

1mg/ml (determined by Bradford assay)

### Formulation

Liquid in. 20mM Tris-HCl buffer (pH 8.0) containing 0.4M urea, 5% glycerol

### Purity

> 90% by SDS-PAGE

### Tag

His-Tag

### Application

SDS-PAGE, Denatured

### Storage Condition

Can be stored at +2C to +8C for 1 week. For long term storage, aliquot and store at -20C to -80C. Avoid repeated freezing and thawing cycles.

## BACKGROUND

---

### Description

Ephrin-B1, also known as EFNB1, belongs to the Eph family. Ephrins, which act as ligands for Eph receptors, are cell-surface proteins that fall into two categories, ephrin-A and ephrin-B, based on their structure and function. EFNB1 proteins are transmembrane and have conserved cytoplasmic tyrosine residues that are phosphorylated upon interaction with an EphB receptor. Also, EFNB1 transduces outside-in signals through C-terminal protein interactions that effect integrin-mediated cell attachment and migration. Recombinant human EFNB1 fused to

# Recombinant human Ephrin-B1 protein

Catalog Number: ATGP1193

His-tag at N-terminus.

## Amino acid Sequence

<MGSSHHHHHH SSGLVPRGSH M>LAKNLEPVS WSSLNPKFLS GKGLVIYPKI GDKLDIICPR AEAGRPYEYY KLYLVRPEQA AACSTVLDPN VLVTCNRPEQ EIRFTIKFQE FSPNYMGLEF KKHHDYIITS TSNGSLEGLE NREGGVCRTR TMKIIMKVGQ DPNAVTPPEQL TTSRPSKEAD NTVKMATQAP GSRGSLGDSD GKHETVNQEE KSGPGASGGS SGDPDGFFNS K

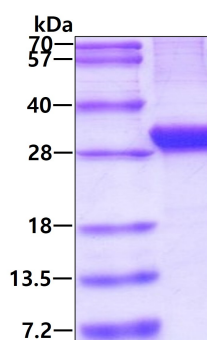
## General References

Nagashima K., et al. (2002) Mol Biol Cell. 13:4231-4242.

Kalo M S., et al. (1996) J Biol Chem. 276:38940-38948.

## DATA

### SDS-PAGE



3ug by SDS-PAGE under reducing condition and visualized by coomassie blue stain.