

# Recombinant human GRP/LGALSL protein

Catalog Number: ATGP1203

## PRODUCT INFORMATION

---

### Expression system

E.coli

### Domain

1-172aa

### UniProt No.

Q3ZCW2

### NCBI Accession No.

NP\_054900

### Alternative Names

Galectin-related protein, GRP, Galectin like protein, HSPC159, Lectin galactoside-binding-like protein

## PRODUCT SPECIFICATION

---

### Molecular Weight

21.5 kDa (196aa) confirmed by MALDI-TOF

### Concentration

1mg/ml (determined by Bradford assay)

### Formulation

Liquid in. 20mM Tris-HCl buffer (pH 8.0) containing 10% glycerol, 2mM DTT, 0.1M NaCl.

### Purity

> 95% by SDS-PAGE

### Tag

His-Tag

### Application

SDS-PAGE

### Storage Condition

Can be stored at +2C to +8C for 1 week. For long term storage, aliquot and store at -20C to -80C. Avoid repeated freezing and thawing cycles.

## BACKGROUND

---

### Description

HSPC159, also designated galectin-related protein (GRP), is a 172 amino acid protein that contains one galectin domain. This protein does not appear to bind carbohydrates or lactose because the critical residues required for binding are not conserved. Recombinant human HSPC159 protein, fused to His-tag at N-terminus, was expressed in E. coli and purified by using conventional chromatography techniques.

### Amino acid Sequence

<MGSSHHHHHH SGLVPRGSH MGSH>MAGSVA DSDAVVKLDD GHLNNSLSSP VQADVYFPRL IVPFCGHIKG

# Recombinant human GRP/LGALS1 protein

Catalog Number: ATGP1203

GMRPGKKVLV MGIVDLNPES FAISLTCGDS EDPPADVAIE LKAVFTDRQL LRNSCISGER GEEQSAIPYF PFIPDQPRV  
EILCEHPRFR VFVDGHQLFD FYHRIQTLA IDTIKINGDL QITKLG

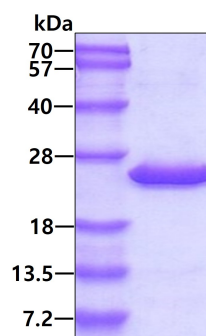
## General References

Zhou D., et al. (2008) *Proteins*. 71(3):1582-8.

Marshall JD., et al. (2007) *Eur J Hum Genet*. 15(12):1193-202.

## DATA

### SDS-PAGE



3 $\mu$ g by SDS-PAGE under reducing condition and visualized by coomassie blue stain.