

Recombinant human SIT1 protein

Catalog Number: ATGP1209

PRODUCT INFORMATION

Expression system

E.coli

Domain

62-196aa

UniProt No.

Q9Y3P8

NCBI Accession No.

NP_055265.1

Alternative Names

Signaling threshold-regulating transmembrane adapter 1, SIT

PRODUCT SPECIFICATION

Molecular Weight

16.9 kDa (156aa) confirmed by MALDI-TOF (Molecular weight on SDS-PAGE will appear higher)

Concentration

0.25mg/ml (determined by Bradford assay)

Formulation

Liquid in. 20mM Tris-HCl buffer (pH 8.0) containing 20% glycerol

Purity

> 90% by SDS-PAGE

Tag

His-Tag

Application

SDS-PAGE

Storage Condition

Can be stored at +2C to +8C for 1 week. For long term storage, aliquot and store at -20C to -80C. Avoid repeated freezing and thawing cycles.

BACKGROUND

Description

SIT1, also known as signaling threshold-regulating transmembrane adapter 1, negatively regulates TCR (T-cell antigen receptor) -mediated signaling in T-cells. This protein involved in positive selection of T-cells. Recombinant human SIT1 protein, fused to His-tag at N-terminus, was expressed in E. coli and purified by using conventional chromatography.

Amino acid Sequence

<MGSSHHHHHH SGLVPRGSH M>HLSQWTRGR SRSHPGQGRS GESVEEVPLY GNLHYLQTGR LSQDPEPDQQ

Recombinant human SIT1 protein

Catalog Number: ATGP1209

DPTLGGPARA AEEVMCYTSL QLRPPQGRIP GPGTPVKYSE VVLDSEPKSQ ASGPEPELYA SVCAQTRRAR ASFPDQAYAN
SQPAAS

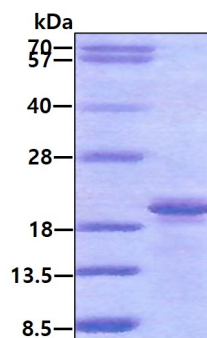
General References

Marie-Cardine A., et al. (1999) J. Exp. Med. 189:1181-1194

Pfrepper K., et al. (2001) Eur. J. Immunol. 31:1825-1836

DATA

SDS-PAGE



3ug by SDS-PAGE under reducing condition and visualized by coomassie blue stain.