

Recombinant human GPD1L protein

Catalog Number: ATGP1214

PRODUCT INFORMATION

Expression system

E.coli

Domain

1-351aa

UniProt No.

Q8N335

NCBI Accession No.

NP_055956

Alternative Names

Glycerol-3-phosphate dehydrogenase 1-like protein, GPD1-L

PRODUCT SPECIFICATION

Molecular Weight

40.6 kDa (371aa) confirmed by MALDI-TOF

Concentration

1mg/ml (determined by Bradford assay)

Formulation

Liquid in. 20mM Tris-HCl buffer (pH 8.0) containing 20% glycerol, 1mM DTT

Purity

> 95% by SDS-PAGE

Tag

His-Tag

Application

SDS-PAGE

Storage Condition

Can be stored at +2C to +8C for 1 week. For long term storage, aliquot and store at -20C to -80C. Avoid repeated freezing and thawing cycles.

BACKGROUND

Description

GPD1L, also known as glycerol-3-phosphate dehydrogenase 1-like protein, converts sn-glycerol 3-phosphate to glycerone phosphate. This protein is found in the cytoplasm, associated with the plasma membrane, where it binds the sodium channel, voltage-gated, type V, alpha subunit (SCN5A). Mutations in GPD1L are the cause of sudden infant death syndrome (SIDS) and Brugada syndrome type 2, an autosomal dominant tachyarrhythmia. Recombinant human GPD1L protein, fused to His-tag at N-terminus, was expressed in E. coli and purified by using conventional chromatography.

Recombinant human GPD1L protein

Catalog Number: ATGP1214

Amino acid Sequence

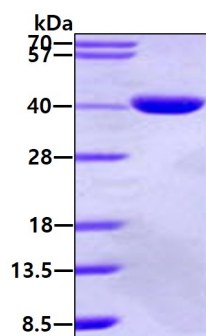
<MGSSHHHHHH SSGLVPRGSH> MAAAPLKVCI VGSGNWGSAV AKIIGNNVKK LQKFASTVKM WVFEETVNGR
KLTDIINNDH ENVKYLPGHK LPENNVAMSN LSEAVQDADL LVFVIPHQFI HRICDEITGR VPKKALGITL IKGIDEGPEG
LKLISDIIRE KMGIDISVLM GANIANEVAA EKFCETTIGS KVMENGLLFK ELLQTPNFRI TVVDDADTVE LCGALKNIVA
VGAGFCDGLR CGDNTKAAVI RLGLMEMIAF ARIFCKGQVS TATFLESCGV ADLITTCYGG RNRRVAEFAFA RTGKTIEELE
KEMLNGQKLQ GPQTSAEVYR ILKQKGLLDK FPLFTAVYQI CYESRPVQEM LSCLQSHPEH T

General References

Valdivia C.R., et al. (2009) *Am. J. Physiol.* 297:H1446-H1452
Van Norstrand D.W., et al. (2007) *Circulation.* 116:2253-2259

DATA

SDS-PAGE



3 μ g by SDS-PAGE under reducing condition and visualized by coomassie blue stain.