

Recombinant human MAD2L1 protein

Catalog Number: ATGP1216

PRODUCT INFORMATION

Expression system

E.coli

Domain

1-205aa

UniProt No.

Q13257

NCBI Accession No.

NP_002349

Alternative Names

MAD2L1-binding protein, HSMAD2, MAD2

PRODUCT SPECIFICATION

Molecular Weight

25.7 kDa (225aa) confirmed by MALDI-TOF

Concentration

0.5mg/ml (determined by Bradford assay)

Formulation

Liquid in. 20mM Tris-HCl buffer (pH 8.0) containing 20% glycerol, 0.1M NaCl, 1mM DTT

Purity

> 95% by SDS-PAGE

Tag

His-Tag

Application

SDS-PAGE

Storage Condition

Can be stored at +2C to +8C for 1 week. For long term storage, aliquot and store at -20C to -80C. Avoid repeated freezing and thawing cycles.

BACKGROUND

Description

MAD2L1, also known as MAD2L1-binding protein, is a component of the mitotic spindle assembly checkpoint that prevents the onset of anaphase until all chromosomes are properly aligned at the metaphase plate. Recombinant human MAD2L1 protein, fused to His-tag at N-terminus, was expressed in E. coli and purified by using conventional chromatography.

Amino acid Sequence

MGSSHHHHHHH SGLVPRGSH MALQLSREQG ITLRGS AEIV AEFFSFGINS ILYQRGIYPS ETFTRVQKYG LTLVTTDL E

Recombinant human MAD2L1 protein

Catalog Number: ATGP1216

LIKYLNNVVE QLKDWLYKCS VQKLVVVISN IESGEVLERW QFDIECDKTA KDDSAPREKS QKAIQDEIRS VIRQITATVT
FLPLLEVSCS FDLIIYTDKD LVVPEKWEEES GPQFITNSEE VRLRSFTTTI HKVNSMVAYK IPVND

General References

Habu T., et al. (2002) EMBO J. 21:6419-6428

Matsuoka S., et al. (2007) Science. 316:1160-1166

DATA

SDS-PAGE

(kDa)

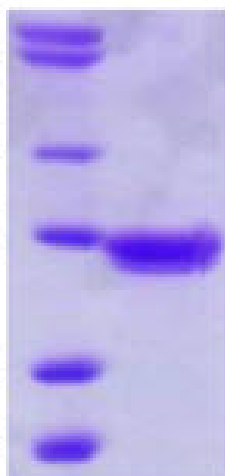
57

40

28

18

13.5



3ug by SDS-PAGE under reducing condition and visualized by coomassie blue stain.

15% SDS-PAGE (3ug)