

Recombinant human RAB35 protein

Catalog Number: ATGP1218

PRODUCT INFORMATION

Expression system

E.coli

Domain

1-201aa

UniProt No.

Q15286

NCBI Accession No.

NP_006852.1

Alternative Names

Ras-related protein Rab-35, H-ray, RAB1C, RAY, RAB35 member RAS oncogene family, GTP-binding protein RAY, Ras-related protein Rab-1C

PRODUCT SPECIFICATION

Molecular Weight

25.1 kDa (221aa) confirmed by MALDI-TOF

Concentration

0.25mg/ml (determined by Bradford assay)

Formulation

Liquid in. 20mM Tris-HCl buffer (pH 8.0) containing 40% glycerol, 0.15M NaCl, 1mM DTT

Purity

> 90% by SDS-PAGE

Tag

His-Tag

Application

SDS-PAGE

Storage Condition

Can be stored at +2C to +8C for 1 week. For long term storage, aliquot and store at -20C to -80C. Avoid repeated freezing and thawing cycles.

BACKGROUND

Description

RAB35, also known as ras-related protein Rab-35, is localized to the plasma membrane and endocytic compartments and controls a fast endocytic recycling pathway. Consistent with a key requirement for Rab35-regulated recycling during cell division, inhibition of Rab35 function leads to the accumulation of endocytic markers on numerous cytoplasmic vacuoles in cells that failed cytokinesis. Recombinant human RAB35 protein, fused to His-tag at N-terminus, was expressed in E. coli and purified by using conventional chromatography.

Recombinant human RAB35 protein

Catalog Number: ATGP1218

Amino acid Sequence

<MGSSHHHHH SSGLVPRGSH> MARDYDHLFK LLIIGDSGVG KSSLLLRFAD NTFSGSYITT IGVDFKIRTV EINGEKVKLQ
IWDTAGQERF RTITSTYYRG THGVIVYDV TSAESFVNK RVLHEINQNC DDVCRILVGN KNDDPERKVV ETEDAYKFAG
QMGIQLFETS AKENVNVEEM FNCITELVLR AKKDNLAKQQ QQQQNDVVKL TKNSKRKKRC C

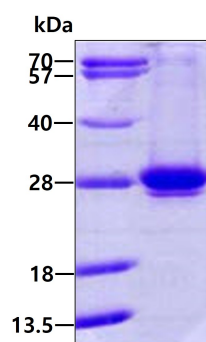
General References

Kouranti I., et al. (2006) *Curr. Biol.* 16:1719-1725

Marat A.L., et al. (2010) *J. Biol. Chem.* 285:10627-10637

DATA

SDS-PAGE



3 μ g by SDS-PAGE under reducing condition and visualized by coomassie blue stain.