

Recombinant human SUFU protein

Catalog Number: ATGP1221

PRODUCT INFORMATION

Expression system

E.coli

Domain

1-484aa

UniProt No.

Q9UMX1

NCBI Accession No.

NP_057253

Alternative Names

suppressor of fused homolog, PRO1280, SuFuH, SuFuXL

PRODUCT SPECIFICATION

Molecular Weight

56.1 kDa (504aa)

Concentration

0.5mg/ml (determined by Bradford assay)

Formulation

Liquid in. Phosphate-Buffered Saline (pH 7.4) containing 10% glycerol

Purity

> 90% by SDS-PAGE

Tag

His-Tag

Application

SDS-PAGE

Storage Condition

Can be stored at +2C to +8C for 1 week. For long term storage, aliquot and store at -20C to -80C. Avoid repeated freezing and thawing cycles.

BACKGROUND

Description

SuFu (Suppressor of fused homolog) belongs to the SuFu family. This protein is negative regulator of the hedgehog signaling pathway. Defects in this gene are a cause of medulloblastoma. SuFu has been shown to interact with GLI1, GLI3 and PEX26. Recombinant human SuFu protein, fused to His-tag at N-terminus, was expressed in E. coli and purified by using conventional chromatography techniques.

Amino acid Sequence

<MGSSHHHHHH SGLVPRGSH> MAELRPSGAP GPTAPPAPGP TAPPAFASLF PPGLHAIYGE CRRLYPDQPN PLQVTAIVKY

Recombinant human SUFU protein

Catalog Number: ATGP1221

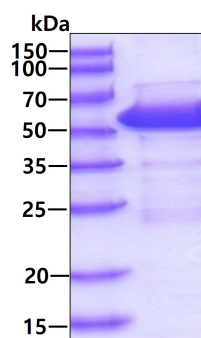
WLGGPDPLDY VSMYRNVGSP SANIPEHWHY ISFGLSDLYG DNRVHEFTGT DGPSGFGFEL TFRLKRETGE SAPPTWPAEL
MQGLARYVFQ SENTFCSGDH VSWHSPLDNS ESRIQHMLLT EDPQMOPVQT PFGVVTFLQI VGVCTEELHS AQQWNGQGIL
ELLRTVPIAG GPWLITDMRR GETIFEIDPH LQERVDKIE TDGSNLSGVS AKCAWDDLRS PPEDDEDSRS ICIQTQPRRL
SGKDTEQIRE TLRRGLEINS KVLPPINPQ RQNGLAHDRA PSRKDSLESD SSTAIPHEL IRTQLESVH LKFNQESGAL
IPLCLRGRLL HGRHFTYKSI TGDMAITFVS TGVEGAFATE EHPYAAHGPW LQILLTEEFV EKMLELDEL TSPEEFKLPK
EYSWPEKCLK VSILPDVVFV SPLH

General References

Dunaeva M, et al. (2003) J. Biol. Chem. 278 (7): 5116-22.
Murone M., et al. (2000) Nat. Cell Biol. 2:310-312

DATA

SDS-PAGE



3ug by SDS-PAGE under reducing condition and visualized by coomassie blue stain.