

Recombinant human ARFL3/ARL3 protein

Catalog Number: ATGP1222

PRODUCT INFORMATION

Expression system

E.coli

Domain

1-182aa

UniProt No.

P36405

NCBI Accession No.

NP_004302

Alternative Names

ADP-ribosylation factor-like protein 3, ARFL3, ADP ribosylation factor like GTPase 3

PRODUCT SPECIFICATION

Molecular Weight

23.0 kDa (206aa) confirmed by MALDI-TOF

Concentration

1mg/ml (determined by Bradford assay)

Formulation

Liquid in. 20mM Tris-HCl buffer (pH 8.0) containing 30% glycerol, 0.1M NaCl, 1mM DTT, 0.1mM PMSF

Purity

> 95% by SDS-PAGE

Tag

His-Tag

Application

SDS-PAGE

Storage Condition

Can be stored at +2C to +8C for 1 week. For long term storage, aliquot and store at -20C to -80C. Avoid repeated freezing and thawing cycles.

BACKGROUND

Description

ARL3, also known as ARFL3, is a member of the ARF-like protein (ARL) subfamily of small GTPases. Unlike ARFs, ARL3 does not activate the cholera toxin ADP-ribosyltransferase. This protein is ubiquitously expressed. It may play a role in maintaining rod photoreceptor cells and regulating microtubule-dependent processes. Knockdown of ARL3 leads to altered cell morphology, failure of cytokinesis, acetylation of alpha tubulin and an increase in binucleated cells. Recombinant human ARL3 protein, fused to His-tag at N-terminus, was expressed in E. coli and purified by using conventional chromatography.

Recombinant human ARFL3/ARL3 protein

Catalog Number: ATGP1222

Amino acid Sequence

MGSSHHHHHH SSGLVPRGSH MGSHMGLLSI LRKLKSAPDQ EVRILLGLD NAGKTTLLKQ LASEDISHIT PTQGFNIKSV
QSQGFKLNWV DIGGQRKIRP YWKNYFENTD ILIYVIDSAD RKRFEETGQE LAELLEEEKL SCVPVLIFAN KQDLLTAAPA
SEIAEGLNLH TIRDRVWQIQ SCSALTGEGV QDGMNWVCKN VNAKKK

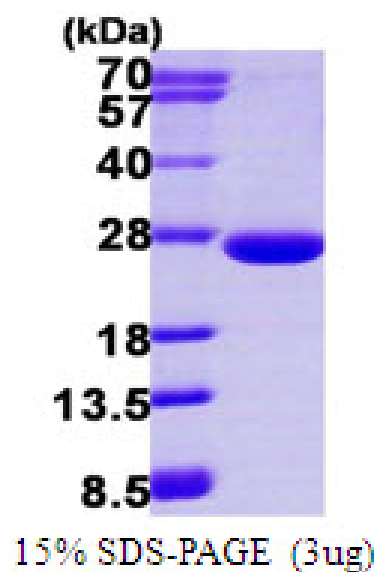
General References

Bartolini F. et al. (2002) J Biol Chem. 277:14629-14634.

Hillig R.C. et al. (2001) Structure. 8:1239-1245.

DATA

SDS-PAGE



3ug by SDS-PAGE under reducing condition and visualized by coomassie blue stain.