

Recombinant human Keratin 14/KRT14 protein

Catalog Number: ATGP1225

PRODUCT INFORMATION

Expression system

E.coli

Domain

1-472aa

UniProt No.

P02533

NCBI Accession No.

AAH19097

Alternative Names

Keratin 14, cytokeratin 14, GIG36, MGLAP, NTI

PRODUCT SPECIFICATION

Molecular Weight

53.8 kDa (492aa)

Concentration

1mg/ml (determined by Bradford assay)

Formulation

Liquid in. 20mM Tris-HCl buffer (pH 8.0) containing 10% glycerol, 0.4M urea

Purity

> 85% by SDS-PAGE

Tag

His-Tag

Application

SDS-PAGE, Denatured

Storage Condition

Can be stored at +2C to +8C for 1 week. For long term storage, aliquot and store at -20C to -80C. Avoid repeated freezing and thawing cycles.

BACKGROUND

Description

KRT14, also known as keratin 14, is a member of the cytokeratin subfamily of intermediate filament proteins (IFPs). It is unique in that it is normally expressed in the basal cells of complex epithelia but not in stratified or simple epithelia. It functions to regulate cell growth and size through its interactions with the adaptor protein 14-3-3 sigma to mediate protein synthesis. Recombinant human KRT14 protein, fused to His-tag at N-terminus, was expressed in E. coli and purified by using conventional chromatography.

Recombinant human Keratin 14/KRT14 protein

Catalog Number: ATGP1225

Amino acid Sequence

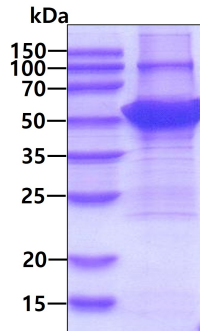
<MGSSHHHHHH SSGLVPRGSH> MTTCSRQFTS SSSMKGSCGI GGGIGGGSSR ISSVLAGGSC RAPSTYGGGL
SVSSSRFSSG GAYGLGGGYG GGFSSSSSF GSGFGGGYGG GLGTGLGGGF GGFAGGDGL LVGSEKVTMQ
NLNDRLASYL DKVRALEEAN ADLEVKIRDW YQRQRP AEIK DYSFYFKTIE DLRNKILTAT VDNANVLLQI DNARLAADD
RTKYETELNL RMSVEADING LRRVLDELTL ARADLEMQIE SLKEELAYLK KNHEEEMNAL RGQVGGDVNV EMDAAPGVDL
SRILNEMRDQ YEKMAEKNRK DAEWFFTKT EELNREVATN SELVQSGKSE ISELRRMQN LEIELQSQLS MKASLENSLE
ETKGRYCMQL AQIQEMIGSV EEQLAQLRCE MEQQNQEYKI LLDVKTRLEQ EIATYRRLL EGEDAHLSSSQ FSSGSQSSRD
VTSSSRQIRT KVMDVHDGKV VSTHEQVLRT KN

General References

Romano RA. et al. (2007) J Invest Dermatol. 127:1175-1186.
Coulombe PA. et al. (1991) Cell. 66 (6): 1301-11.

DATA

SDS-PAGE



3ug by SDS-PAGE under reducing condition and visualized by coomassie blue stain.