

Recombinant human Cyclophilin-like 3/PPIL3 protein

Catalog Number: ATGP1230

PRODUCT INFORMATION

Expression system

E.coli

Domain

1-161aa

UniProt No.

Q9H2H8

NCBI Accession No.

NP_570981

Alternative Names

Peptidyl-prolyl cis-trans isomerase-like 3 isoform PPIL3b, CYPJ, Peptidyl-prolyl cis-trans isomerase-like 3, PPlase, Cyclophilin J, Cyclophilin-like protein PPIL3, Rotamase PPIL3

PRODUCT SPECIFICATION

Molecular Weight

20.3 kDa (181aa) confirmed by MALDI-TOF

Concentration

0.5mg/ml (determined by Bradford assay)

Formulation

Liquid in. 20mM Tris-HCl buffer (pH 8.0) containing 20% glycerol, 0.1M NaCl, 1mM DTT

Purity

> 90% by SDS-PAGE

Biological Activity

Specific activity is > 280nmol/min/mg, and is defined as the amount of enzyme that cleaves 1umole of suc-AAPF-pNA per minute at 37C in Tris-Hcl pH8.0 using chymotrypsin.

Tag

His-Tag

Application

SDS-PAGE, Enzyme Activity

Storage Condition

Can be stored at +2C to +8C for 1 week. For long term storage, aliquot and store at -20C to -80C. Avoid repeated freezing and thawing cycles.

BACKGROUND

Description

PPIL3, also known as peptidyl-prolyl cis-trans isomerase-like 3, is a member of the cyclophilin family that catalyzes the cis-trans isomerization of peptidylprolyl imide bonds in oligopeptides. It has been proposed to act

Recombinant human Cyclophilin-like 3/PPIL3 protein

Catalog Number: ATGP1230

either as catalysts or as molecular chaperones in protein-folding events. Recombinant human PPIL3 protein, fused to His-tag at N-terminus, was expressed in *E. coli* and purified by using conventional chromatography.

Amino acid Sequence

<MGSSHHHHHH SSGLVPRGSH> MSVTLHTDVG DIKIEVFCER TPKTCENFLA LCASNYYNGC IFHRNIKGFM
VQTGDPTGTG RGGNSIWGKK FEDEYSEYLYK HNVRGVVSM NNGPNTNGSQ FFITYGKQPH LDMKYTVFGK VIDGLETLDE
LEKLPVNEKT YRPLNDVHIK DITIHPFA Q

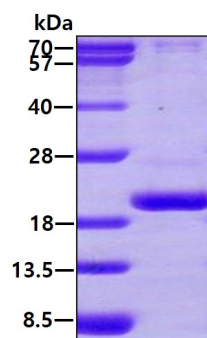
General References

Zhou Z. et al. (2001) *Cytogenet Cell Genet.* 92: 231-236

Jurica MS. et al. (2002) *RNA.* 8:426-439.

DATA

SDS-PAGE



3ug by SDS-PAGE under reducing condition and visualized by coomassie blue stain.