

# Recombinant human LAT protein

Catalog Number: ATGP1238

## PRODUCT INFORMATION

---

### Expression system

E.coli

### Domain

28-233aa

### UniProt No.

O43561

### NCBI Accession No.

NP\_001014987

### Alternative Names

linker for activation of T-cells family member 1 isoform b, LAT1, pp36

## PRODUCT SPECIFICATION

---

### Molecular Weight

24.4 kDa (227aa) confirmed by MALDI-TOF (Molecular weight on SDS-PAGE will appear higher)

### Concentration

1mg/ml (determined by Bradford assay)

### Formulation

Liquid in. 20mM Tris-HCl buffer (pH 8.0) containing 1mM DTT

### Purity

> 95% by SDS-PAGE

### Tag

His-Tag

### Application

SDS-PAGE

### Storage Condition

Can be stored at +2C to +8C for 1 week. For long term storage, aliquot and store at -20C to -80C. Avoid repeated freezing and thawing cycles.

## BACKGROUND

---

### Description

LAT is an integral membrane protein which is phosphorylated by ZAP-70/Syk protein tyrosine kinases following activation of the T-cell antigen receptor (TCR) signal transduction pathway. LAT is expressed in T lymphocytes in interstitial spaces, platelets and megakaryocytes. LAT is not expressed in B cells, macrophages, plasma cells, monocytes, epithelial histiocytes and dendritic cells. Recombinant human LAT protein, fused to His-tag at N-terminus, was expressed in E. coli and purified by using conventional chromatography techniques.

# Recombinant human LAT protein

Catalog Number: ATGP1238

## Amino acid Sequence

<MGSSHHHHHH SSGLVPRGSH M>HCHRLPGSY DSTSSDSLYP RGIQFKRPHT VAPWPPAYPP VTSYPPLSQP  
DLLPIRSPQ PLGGSHRTPS SRRSDGANS VASYNEEPA CEDADEDED YHNPGLVVL PDSTPATSTA APSAPALSTP  
GIRDSAFSME SIDDYVNVPE SGESAEASLD GSREYVNVSQ ELHPGAAKTE PAALSSQEAE EVEEEGAPDY ENLQELN

## General References

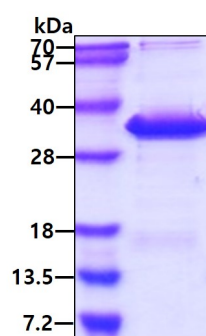
Paz PE., et al. (2001) Biochem J. 356(2):461-71.

Zhang W., et al. (1998) Cell. 92(1):83-92.

## DATA

---

### SDS-PAGE



3ug by SDS-PAGE under reducing condition and visualized by coomassie blue stain