

Recombinant human Betacellulin protein

Catalog Number: ATGP1250

PRODUCT INFORMATION

Expression system

E.coli

Domain

32-111aa

UniProt No.

P35070

NCBI Accession No.

NP_001720.1

Alternative Names

Betacellulin, probetacellulin precursor

PRODUCT SPECIFICATION

Molecular Weight

11.3kD (101aa) confirmed by MALDI-TOF (Molecular weight on SDS-PAGE will appear higher)

Concentration

0.25mg/ml (determined by Bradford assay)

Formulation

Liquid in. 20mM Tris-HCl buffer (pH 8.0) containing 5mM DTT, 20% glycerol, 200mM NaCl

Purity

> 90% by SDS-PAGE

Endotoxin level

< 1 EU per 1ug of protein (determined by LAL method)

Tag

His-Tag

Application

SDS-PAGE

Storage Condition

Can be stored at +2C to +8C for 1 week. For long term storage, aliquot and store at -20C to -80C. Avoid repeated freezing and thawing cycles.

BACKGROUND

Description

BTC (Betacellulin) is a member of the EGF family of growth factors and contains 1 EGF-like domain. It is synthesized primarily as a transmembrane precursor, which is then processed to mature molecule by proteolytic events. This protein is a ligand for the EGF receptor. The effects of BTC are probably mediated by the EGF receptor and other related receptors. Recombinant human BTC protein, fused to His-tag at N-terminus, was

Recombinant human Betacellulin protein

Catalog Number: ATGP1250

expressed in E. coli and purified by using conventional chromatography techniques.

Amino acid Sequence

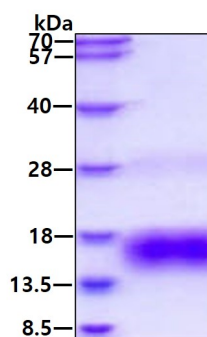
<MGSSHHHHHH SSGLVPRGSH M>DGNSTRSPE TNGLLCGDPE ENCAATTTQS KRKGHF SRCP KQYKH YCIKG
RCRFVVAEQT PSCVCDEGYI GARCERVDLF Y

General References

Gratao AA, et al. (2008) Biol Reprod.78(1):43-52.
Genetos DC, et al. (2010) Cell Tissue Res. 340(1):81-9.

DATA

SDS-PAGE



3ug by SDS-PAGE under reducing condition and visualized by coomassie blue stain.