

Recombinant human ARFRP2/ARL15 protein

Catalog Number: ATGP1257

PRODUCT INFORMATION

Expression system

E.coli

Domain

1-204aa

UniProt No.

Q9NXU5

NCBI Accession No.

NP_061960

Alternative Names

ADP-ribosylation factor-like protein 15, ARFRP2, ADP ribosylation factor like GTPase 15, ADP-ribosylation factor related protein 2, ARF-related protein 2

PRODUCT SPECIFICATION

Molecular Weight

25 kDa (224aa) confirmed by MALDI-TOF

Concentration

1mg/ml (determined by Bradford assay)

Formulation

Liquid in. 20mM Tris-HCl buffer (pH 8.0) containing 1mM DTT, 10% glycerol, 0.1M NaCl

Purity

> 85% by SDS-PAGE

Tag

His-Tag

Application

SDS-PAGE

Storage Condition

Can be stored at +2C to +8C for 1 week. For long term storage, aliquot and store at -20C to -80C. Avoid repeated freezing and thawing cycles.

BACKGROUND

Description

ARL15, also known as ARFRP2, belongs to the ARF family. ARFs are important in eukaryotic vesicular trafficking pathways and play an essential role in the activation of phospholipase D. ARL15 variants influence levels of Acrp30, an adipocyte-derived protein that is particularly heritable and inversely associated with risk of type 2 diabetes mellitus and coronary heart disease. Recombinant human ARL15 protein, fused to His-tag at N-terminus, was expressed in E. coli and purified by using conventional chromatography techniques.

Recombinant human ARFRP2/ARL15 protein

Catalog Number: ATGP1257

Amino acid Sequence

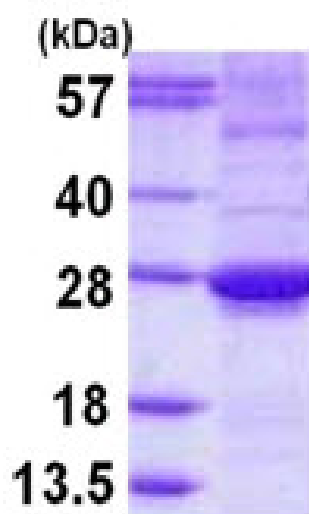
MGSSHHHHHH SSSLVPRGSH MSDLRITEAF LYMDYLCFRA LCCKGPPPAR PEYDLVCIGL TGSGKTSLLS KLCSESPDNV
VSTTGFSIKA VPFQNAILNV KELGGADNIR KYWSRYIQGS QGVIFVLDSA SSEDDLEAAR NELHSALQHP QLCTLPFLIL
ANHQDKPAAR SVQEIKKYFE LEPLARGKRW ILQPCSLDDM DALKDSFSQL INLLEEKDHE AVRVM

General References

Richards J B., et al. (2009) PLoS Genet. 5:e1000768.
Gillingham A K., et al. (2007) Annu Rev Cell Dev Biol. 23:579-611.

DATA

SDS-PAGE



3ug by SDS-PAGE under reducing condition and visualized by coomassie blue stain.

15% SDS-PAGE (3ug)