

Recombinant human SYF2 protein

Catalog Number: ATGP1269

PRODUCT INFORMATION

Expression system

E.coli

Domain

94-243aa

UniProt No.

O95926

NCBI Accession No.

NP_056299

Alternative Names

Pre-mRNA-splicing factor SYF2, CBPIN, GCIPIP, p29

PRODUCT SPECIFICATION

Molecular Weight

20.5 kDa (173aa) confirmed by MALDI-TOF

Concentration

0.25mg/ml (determined by Bradford assay)

Formulation

Liquid in. 20mM Tris-HCl buffer (pH 8.0) containing 50% glycerol, 0.2M NaCl, 5mM DTT, 2mM EDTA

Purity

> 90% by SDS-PAGE

Tag

His-Tag

Application

SDS-PAGE

Storage Condition

Can be stored at +2C to +8C for 1 week. For long term storage, aliquot and store at -20C to -80C. Avoid repeated freezing and thawing cycles.

BACKGROUND

Description

SYF2, also known as pre-mRNA-splicing factor SYF2, may be involved in pre-mRNA splicing. This protein interacts with cyclin D-type binding-protein 1, which is thought to be a cell cycle regulator at the G1/S transition. It is abundantly expressed in the heart, skeletal muscle and kidney and is expressed at lower levels in other tissues. Recombinant human SYF2 protein, fused to His-tag at N-terminus, was expressed in E. coli and purified by conventional chromatography, after refolding of the isolated inclusion bodies in a renaturation buffer.

Recombinant human SYF2 protein

Catalog Number: ATGP1269

Amino acid Sequence

<MGSSHHHHH SSGLVPRGSH MGS>DYEKVKL LEISAEDAER WERKKKRKNP DLGFSDYAAA QLRQYHRLTK
QIKPDMETYE RLREKHGEEF FPTSNSLLHG THVPSTEEID RMVIDLEKQI EKRDKYSRRR PYNDDADIDY INERNAKFNK
KAERFYGKYT AEIKQNLERG TAV

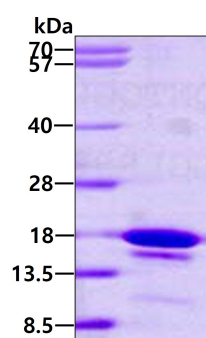
General References

Chang M.-S., et al. (2000) Biochem. Biophys. Res. Commun. 279:732-737

Jurica M.S., et al. (2002) RNA. 8:426-439

DATA

SDS-PAGE



3ug by SDS-PAGE under reducing condition and visualized by coomassie blue stain.