

Recombinant human Ephrin-A1 protein

Catalog Number: ATGP1279

PRODUCT INFORMATION

Expression system

E.coli

Domain

19-182aa

UniProt No.

P20827

NCBI Accession No.

NP_004419.1

Alternative Names

ephrin A1, EFNA1, EPH-related receptor tyrosine kinase ligand 1, LERK-1, Immediate early response protein B61, Tumor necrosis factor alpha-induced protein 4, TNF alpha-induced protein 4, gastric cancer metastasis associated long noncoding RNA, EPLG1, LERK1, TNFAIP4, ECKLG, GMAN

PRODUCT SPECIFICATION

Molecular Weight

21.6 kDa (185aa)

Concentration

1mg/ml (determined by Bradford assay)

Formulation

Liquid in. 20mM Tris-HCl buffer (pH 8.0) containing 10% glycerol, 0.4M urea

Purity

> 90% by SDS-PAGE

Tag

His-Tag

Application

SDS-PAGE

Storage Condition

Can be stored at +2C to +8C for 1 week. For long term storage, aliquot and store at -20C to -80C. Avoid repeated freezing and thawing cycles.

BACKGROUND

Description

EFNA1, also known as Ephrin A1, is a member of the ephrin (EPH) family. The EPH subfamily represents the largest group of receptor protein kinases. There is increasing evidence that Eph family members are involved in central nervous system function and in development. Recombinant human EFNA1 protein, fused to His-tag at N-terminus, was expressed in E. coli.

Recombinant human Ephrin-A1 protein

Catalog Number: ATGP1279

Amino acid Sequence

<MGSSHHHHH SSGLVPRGSH M>DRHTVFWNS SNPKFRNEDY TIHVQLNDYV DIICPHYEDH SVADAAMEQY
ILYLVEHEEY QLCQPQSKDQ VRWQCNRPSA KHGPEKLSEK FQRFTPFTLG KEFKEGHSYY YISKPIHQHE DRCLRLKVTV
SGKITHSPQA HVNPQEKRLA ADDPEVRVLH SIGH S

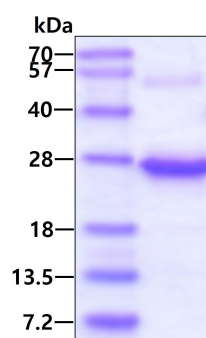
General References

Bartley T.D. et al. (1994) Nature. 368: 558-560.

Bergemann A.D. et al. (1995) Mol. Cell. Biol. 15: 4921-4929.

DATA

SDS-PAGE



3ug by SDS-PAGE under reducing condition and visualized by coomassie blue stain.