

# Recombinant human TUBG1 protein

Catalog Number: ATGP1295

## PRODUCT INFORMATION

---

### Expression system

E.coli

### Domain

1-451aa

### UniProt No.

P23258

### NCBI Accession No.

NP\_001061

### Alternative Names

Tubulin gamma-1 chain, GCP-1, TuBG, TuBGCP1

## PRODUCT SPECIFICATION

---

### Molecular Weight

53.3 kDa (471aa)

### Concentration

1mg/ml (determined by Bradford assay)

### Formulation

Liquid in. 20mM Tris-HCl buffer (pH 8.0) 1M urea, 5% glycerol

### Purity

> 85% by SDS-PAGE

### Tag

His-Tag

### Application

SDS-PAGE, Denatured

### Storage Condition

Can be stored at +2C to +8C for 1 week. For long term storage, aliquot and store at -20C to -80C. Avoid repeated freezing and thawing cycles.

## BACKGROUND

---

### Description

TuBG1 is a member of the tubulin superfamily. This protein localizes to the centrosome where it binds to microtubules as part of a complex referred to as the gamma-tubulin ring complex. It mediates microtubule nucleation and is required for microtubule formation and progression of the cell cycle. Recombinant human TuBG1 protein, fused to His-tag at N-terminus, was expressed in E. coli.

### Amino acid Sequence

MGSSHHHHHH SGLVPRGSH MPREITLQL GQCGNQIGFE FWKQLCAEHG ISPEGIVEEF ATEGTDRKDV FFYQADDEHY

# Recombinant human TUBG1 protein

Catalog Number: ATGP1295

IPRAVLLDLE PRVIHSILNS PYAKLYNPEN IYLSEHGGGA GNNWASGFSQ GEKIHEDIFD IIDREADGSD SLEGFVLCHS  
IAGGTGSGLG SYLLERLNDR YPKKLVQTYS VFPNQDEMSD VVVQPYNLL TLKRLTQNAD CVVVDNTAL NRIATDRLHI  
QNPSFSQINQ LVSTIMSAST TTLRYPGYMN NDLIGLIASL IPTPRLHFLM TGYTPLTTDQ SVASVRKTTV LDVMRRLLOP  
KNVMVSTGRD RQTNHCYIAI LNIIQGEVDP TQVHKSLQRI RERKLANFIP WGPASIQVAL SRKSPYLPSA HRVSGLMMAN  
HTSISLFLER TCRQYDKLRK REAFLEQFRK EDMFKDNFDE MDTREIVQQ LIDEYHAATR PDYISWGTQE Q

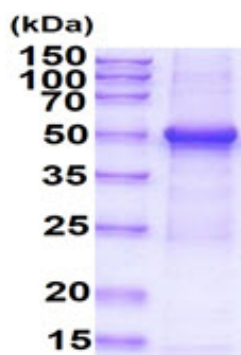
## General References

Zheng Y., et al. (1991) Cell. 65(5):817-23.

Wise DO., et al. (2000) Genomics. 67(2):164-70.

## DATA

### SDS-PAGE



15% SDS-PAGE (3ug)

3ug by SDS-PAGE under reducing condition and visualized by coomassie blue stain.