

Recombinant human UPK3A protein

Catalog Number: ATGP1304

PRODUCT INFORMATION

Expression system

E.coli

Domain

19-207aa

UniProt No.

O75631

NCBI Accession No.

BAA31460.1

Alternative Names

uroplakin-3a, uPK3

PRODUCT SPECIFICATION

Molecular Weight

23.1 kDa (214aa) confirmed by MALDI-TOF

Concentration

0.25mg/ml (determined by Bradford assay)

Formulation

Liquid in. 20mM Tris-HCl buffer (pH 8.0) containing 2mM DTT, 20% glycerol, 150mM NaCl

Purity

> 90% by SDS-PAGE

Tag

His-Tag

Application

SDS-PAGE

Storage Condition

Can be stored at +2C to +8C for 1 week. For long term storage, aliquot and store at -20C to -80C. Avoid repeated freezing and thawing cycles.

BACKGROUND

Description

uPK3A belongs to the uroplakin-3 family. uroplakins (uP) are key components of the urothelium. They are transmembrane proteins that pass the lipid bilayer once (uPII, uPIIIa, and uPIIIb) or four times (uPIa and uPIb; both belonging to the 'tetraspanin' family). All have large luminal/extracellular domains, but only uPIIIa and uPIIIb have significant cytoplasmic portions in their C-termini. uPK3A is a highly specific and moderately sensitive immunohistochemical marker for primary and metastatic urothelial carcinomas. Mutations in this gene may be associated with renal adysplasia. Recombinant human uPK3A protein, fused to His-tag at N-terminus, was

Recombinant human UPK3A protein

Catalog Number: ATGP1304

expressed in *E. coli* and purified by conventional chromatography, after refolding of the isolated inclusion bodies in a renaturation buffer.

Amino acid Sequence

<MGSSHHHHH SSGLVPRGSH MGSHM>VNLQP QLASVTFATN NPTLTTVALE KPLCMFDSKE ALTGTHEVYL
YVLVDSAISR NASVQDSTNT PLGSTFLQTE GGRTGPYKAV AFDLIPCSDL PSLDAIGDVS KASQILNAYL VRVGANGTCL
WDPNFQGLCN PPLSAATEYR FKYVLVNMST GLVEDQTLWS DPIRTNQLTP YSTIDTWPGR RSGG

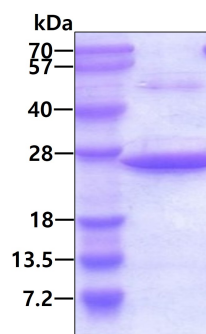
General References

Shapiro, E., et al. (2000) *J. urol.* 164: 1048-1051.

Wu, X.R., et al. (1994) *J. Biol. Chem.* 269:13716-13724.

DATA

SDS-PAGE



3 μ g by SDS-PAGE under reducing condition and visualized by coomassie blue stain.