

# Recombinant human PSMA8 protein

Catalog Number: ATGP1320

## PRODUCT INFORMATION

---

### Expression system

E.coli

### Domain

1-250aa

### UniProt No.

Q8TAA3

### NCBI Accession No.

NP\_001020267

### Alternative Names

Proteasome subunit alpha type-8, PSMA7L

## PRODUCT SPECIFICATION

---

### Molecular Weight

30 kDa (270aa) confirmed by MALDI-TOF

### Concentration

0.5mg/ml (determined by Bradford assay)

### Formulation

Liquid in. 20mM Tris-HCl buffer (pH 8.0) containing 1mM DTT, 10% glycerol, 0.1M NaCl

### Purity

> 90% by SDS-PAGE

### Tag

His-Tag

### Application

SDS-PAGE

### Storage Condition

Can be stored at +2C to +8C for 1 week. For long term storage, aliquot and store at -20C to -80C. Avoid repeated freezing and thawing cycles.

## BACKGROUND

---

### Description

Proteasome subunit alpha type-8, also known as PSMA8, belongs to the peptidase T1A family. PSMA8 is a multicatalytic proteinase complex which is characterized by its ability to cleave peptides with Arg, Phe, Tyr, Leu, and Glu adjacent to the leaving group at neutral or slightly basic pH. The proteasome has an ATP-dependent proteolytic activity. This subunit may be a testis-specific. Recombinant human PSMA8 protein, fused to His-tag at N-terminus, was expressed in E. coli and purified by using conventional chromatography techniques.

## Recombinant human PSMA8 protein

Catalog Number: ATGP1320

### Amino acid Sequence

MGSSHHHHHH SGLVPRGSH MASRYDRAIT VFSPDGHFLFQ VEYAQEAVKK GSTAVGIRGT NIVVLGVEKK SVAKLQDERT  
VRKICALDDH VCMAFAGLTA DARVVINRAR VECQSHKLTV EDPVTVEYIT RFIATLKQKY TQSNRRPFG ISALIVGFDD  
DGISRLYQTD PSGTYHAWKA NAIGRSKTV REFLEKNYTE DAIASDSEAI KLAIKALLEV VQSGGKNIEL AIIRRNQPLK  
MFSAKEVELY VTEIEKEKEE AEKKKSKKSV

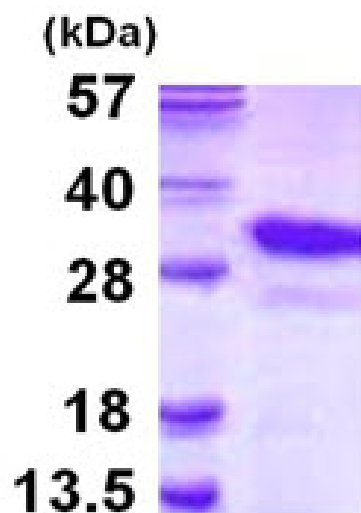
### General References

Schmidt M., et al. (1997) *Mal Biol Rep.* 24:103-112.

Kristensen P., et al. (1995) *Biochem Biophys Res Commun.* 205:1785-1789.

## DATA

### SDS-PAGE



3ug by SDS-PAGE under reducing condition and visualized by coomassie blue stain.

15% SDS-PAGE (3ug)