

Recombinant human PSMB2 protein

Catalog Number: ATGP1321

PRODUCT INFORMATION

Expression system

E.coli

Domain

1-201aa

UniProt No.

P49721

NCBI Accession No.

NP_002785

Alternative Names

Proteasome subunit beta type-2, HC7-I

PRODUCT SPECIFICATION

Molecular Weight

24.9 kDa (221aa) confirmed by MALDI-TOF

Concentration

0.5mg/ml (determined by Bradford assay)

Formulation

Liquid in. 20mM Tris-HCl buffer (pH 8.0) containing 1mM DTT, 30% glycerol, 0.1M NaCl

Purity

> 90% by SDS-PAGE

Tag

His-Tag

Application

SDS-PAGE

Storage Condition

Can be stored at +2C to +8C for 1 week. For long term storage, aliquot and store at -20C to -80C. Avoid repeated freezing and thawing cycles.

BACKGROUND

Description

Proteasome subunit beta type-2, also known as PSMB2, is a member of the proteasome T1B family, which is a 20S core beta subunit. The proteasome is a multicatalytic proteinase complex with a highly ordered ring-shaped 20S core structure. Proteasomes are distributed throughout eukaryotic cells at a high concentration and cleave peptides in an ATP/ubiquitin-dependent process in a non-lysosomal pathway. An essential function of a modified proteasome, the immunoproteasome, is the processing of class I MHC peptides. Recombinant human PSMB2 protein, fused to His-tag at N-terminus, was expressed in E. coli and purified by using conventional

Recombinant human PSMB2 protein

Catalog Number: ATGP1321

chromatography techniques.

Amino acid Sequence

MGSSHHHHHH SSSLVPRGSH MEYLIGIQGP DYVLVASDRV AASNIVQMKD DHDKMFKMSE KILLLCVGEA GDTVQFAEYI
QKNVQLYKMR NGYELSPTAA ANFTRRNLD CLRSRTPYHV NLLLAGYDEH EGPALYMDY LAALAKAPFA AHGYGAFLL
SILDYYTPT ISRERAVELL RKCLEELQKR FILNLPTFSV RIIDKNGIHD LDNISFPKQG S

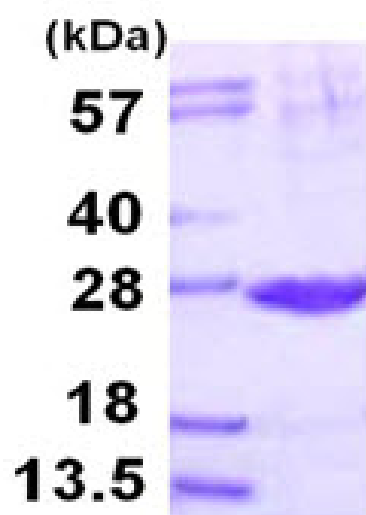
General References

Morimoto Y., et al. (1995) J Biochem. 117:471-474.

Wnzel T., et al. (1995) Nat Struct Biol. 2:199-204.

DATA

SDS-PAGE



3ug by SDS-PAGE under reducing condition and visualized by coomassie blue stain.

15% SDS-PAGE (3ug)