

# Recombinant human PTK9/TWF1 protein

Catalog Number: ATGP1322

## PRODUCT INFORMATION

---

**Expression system**

E.coli

**Domain**

1-252aa

**UniProt No.**

Q12792

**NCBI Accession No.**

AAH22344

**Alternative Names**

Twinfilin-1, PTK9

## PRODUCT SPECIFICATION

---

**Molecular Weight**

31.5 kDa (277aa) confirmed by MALDI-TOF

**Concentration**

0.25mg/ml (determined by Bradford assay)

**Formulation**

Liquid in. 20mM Tris-HCl buffer (pH 8.0) containing 40% glycerol, 0.15M NaCl, 1mM DTT

**Purity**

&gt; 80% by SDS-PAGE

**Tag**

His-Tag

**Application**

SDS-PAGE

**Storage Condition**

Can be stored at +2C to +8C for 1 week. For long term storage, aliquot and store at -20C to -80C. Avoid repeated freezing and thawing cycles.

## BACKGROUND

---

**Description**

TWF1 is a ubiquitous actin-monomer-binding protein that is composed of two ADF-homology domains. It forms a 1:1 complex with ADP-actin-monomers, inhibits nucleotide exchange on actin monomers and prevents assembly of the monomer into filaments. This protein composed of two ADF/cofilin-like (ADF-H) domains connected by a short linker region and followed by a C-terminal tail of 20 residues. The two ADF-H domains are 20% homologous to ADF/cofilin and to each other. Recombinant human TWF1 protein, fused to His-tag at N-terminus, was expressed in E. coli and purified by using conventional chromatography.

## Recombinant human PTK9/TWF1 protein

Catalog Number: ATGP1322

### Amino acid Sequence

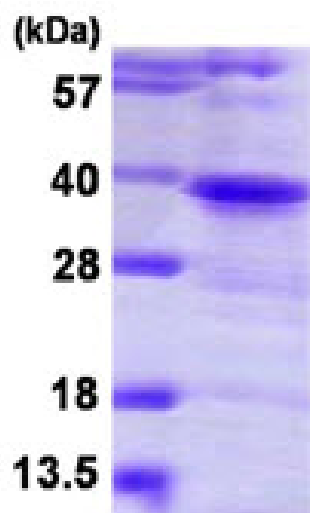
MGSSHHHHHH SGLVPRGSH MGSMMMLYAA TRATLKKEFG GGHIKDEVFG TVKEDVSLHG YKYYLLSQSS PAPLTAAEEE  
LRQIKINEVQ TDVGVDTKHQ TLQGVAFPI REAFQALEKL NNRQLNYVQL EIDIKNEIII LANTTNTTELK DLPKRIPKDS  
ARYHFFLYKH SHEGDYLESI VFIYSMPGYT CSIRERMLYS SCKSRLEIV ERQLQMDVIR KIEIDNGDEL TADFLYEEVH  
PKQHAHKQSF AKPKGPAKGR GIRRLIRGPA ETEATTD

### General References

Beeler J.F., et al. (1994) Mol. Cell. Biol. 14:982-988  
Yu L.-R., et al. (2007) J. Proteome Res. 6:4150-4162

## DATA

### SDS-PAGE



3ug by SDS-PAGE under reducing condition and visualized by coomassie blue stain.

15% SDS-PAGE (3ug)