

Recombinant human CTH protein

Catalog Number: ATGP1333

PRODUCT INFORMATION

Expression system

E.coli

Domain

1-405aa

UniProt No.

P32929

NCBI Accession No.

NP_001893.2

Alternative Names

Cystathionine gamma-lyase, Cystathionine gamma-lyase, Gamma-cystathionase

PRODUCT SPECIFICATION

Molecular Weight

46.7 kDa (425aa) confirmed by MALDI-TOF

Concentration

1mg/ml (determined by Bradford assay)

Formulation

Liquid in. 20mM Tris-HCl buffer (pH 8.0) containing 2mM DTT, 10% glycerol, 100mM NaCl

Purity

> 95% by SDS-PAGE

Tag

His-Tag

Application

SDS-PAGE

Storage Condition

Can be stored at +2C to +8C for 1 week. For long term storage, aliquot and store at -20C to -80C. Avoid repeated freezing and thawing cycles.

BACKGROUND

Description

CTH (Cystathionine gamma-lyase or cystathionase) belongs to the trans-sulfuration enzymes family. This protein is an enzyme which breaks down cystathionine into cysteine and alpha-ketobutyrate. CTH catalyzes the last step in the transsulfuration pathway from methionine to cysteine. Recombinant human CTH protein, fused to His-tag at N-terminus, was expressed in E. coli and purified by using conventional chromatography techniques.

Amino acid Sequence

<MGSSHHHHHH SGLVPRGSH> MQEKDASSQG FLPHFQHFAT QAIHVGQDPE QWTSRAVVPP ISLSTTFKQG

Recombinant human CTH protein

Catalog Number: ATGP1333

APGQHSGFEY SRSGNPTRNC LEKAVAALDG AKYCLAFASG LAATVTITHL LKAGDQIICM DDVYGGTNRV FRQVASEFGL
KISFVDCSKI KLEAAITPE TKLVWIETPT NPTQKVIDIE GCAHIVHKHG DIILVVDNTF MSPYFQRPLA LGADISMYS
TKYMNGHSDV VMGLVSNCE SLHNRLRFLQ NSLGAVPSPI DCYLCNRGLK TLHVRMEKHF KNGMAVAQFL ESNPWVEKVI
YPGLPSHPQH ELVKRQCTGC TGMVTFYIKG TLQHAEIFLK NLKLFTLAES LGGFESLAEL PAIMTHASVL KNDRDVLGIS
DTLIRLSVGL EDEEDLLEDL DQALKAHPP SGSHS

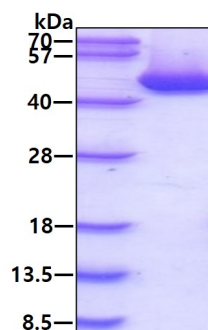
General References

Chiku T., et al. (2009) J. Biol. Chem. 284:11601-11612

Sun Q., et al. (2009) J. Biol. Chem. 284:3076-3085

DATA

SDS-PAGE



3ug by SDS-PAGE under reducing condition and visualized by coomassie blue stain.