

# Recombinant human BDH1 protein

Catalog Number: ATGP1341

## PRODUCT INFORMATION

---

### Expression system

E.coli

### Domain

47-343aa

### UniProt No.

Q02338

### NCBI Accession No.

NP\_976059

### Alternative Names

D-beta-hydroxybutyrate dehydrogenase, BDH, MGC2723, MGC4347, MGC9788, SDR9C1

## PRODUCT SPECIFICATION

---

### Molecular Weight

35.3 kDa (318aa) confirmed by MALDI-TOF

### Concentration

0.25mg/ml (determined by Bradford assay)

### Formulation

Liquid in. 20mM Tris-HCl buffer (pH 8.0) containing 30% glycerol 0.2M NaCl, 2mM DTT, 0.1mM PMSF

### Purity

> 85% by SDS-PAGE

### Tag

His-Tag

### Application

SDS-PAGE

### Storage Condition

Can be stored at +2C to +8C for 1 week. For long term storage, aliquot and store at -20C to -80C. Avoid repeated freezing and thawing cycles.

## BACKGROUND

---

### Description

BDH1 is a member of the short-chain dehydrogenase/reductase gene family. This protein forms a homotetrameric lipid-requiring enzyme of the mitochondrial membrane and has a specific requirement for phosphatidylcholine for optimal enzymatic activity. It catalyzes the interconversion of acetoacetate and (R) -3-hydroxybutyrate, the two major ketone bodies produced during fatty acid catabolism. Recombinant human BDH1 protein, fused to His-tag at N-terminus, was expressed in E. coli and purified by using conventional chromatography.

# Recombinant human BDH1 protein

Catalog Number: ATGP1341

## Amino acid Sequence

<MGSSHHHHH SSGLVPRGSH M>ASAAEPVGS KAVLVTGCDS GFGFSLAKHL HSKGFLVFAG CLMKDKGHDG  
VKELDSLNSD RLRTVQLNVC SSEEVEKVVE IVRSSLKDPE KGMWGLVNNA GISTFGEVEF TSLETYKQVA EVNLWGTVM  
TKSFLPLIRR AKGRVNVNISS MLGRMANPAR SPYCITKFGV EAFSDCLRYE MYPLGVKVSV VEPGNFIAAT SLYSPESIQ  
IAKKMWEELP EVVRKDYGKK YFDEKIAKME TYCSSGSTD T SPVIDAVTHA LTATTPYTRY HPMDYYWWLR MQIMTHLPGA  
ISDMIYIR

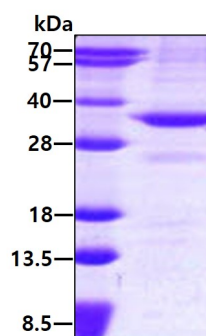
## General References

Marks A.R. et al. (1992) J Biol Chem. 267:15459-15463.

Adami P. et al. (1993) Biochem. J. 292: 863-872.

## DATA

### SDS-PAGE



3 $\mu$ g by SDS-PAGE under reducing condition and visualized by coomassie blue stain.