

# Recombinant human LCMT1 protein

Catalog Number: ATGP1346

## PRODUCT INFORMATION

---

### Expression system

E.coli

### Domain

1-334aa

### UniProt No.

Q9UIC8

### NCBI Accession No.

NP\_057393

### Alternative Names

Leucine carboxyl methyltransferase 1, CGI-68, LCMT, PPMT1

## PRODUCT SPECIFICATION

---

### Molecular Weight

40.9 kDa (358aa) confirmed by MALDI-TOF

### Concentration

1mg/ml (determined by Bradford assay)

### Formulation

Liquid in. 20mM Tris-HCl buffer (pH 8.0) containing 10% glycerol, 1mM DTT, 0.15M NaCl.

### Purity

> 95% by SDS-PAGE

### Tag

His-Tag

### Application

SDS-PAGE

### Storage Condition

Can be stored at +2C to +8C for 1 week. For long term storage, aliquot and store at -20C to -80C. Avoid repeated freezing and thawing cycles.

## BACKGROUND

---

### Description

LCMT1 catalyzes the methylation of the carboxyl group of the C-terminal leucine residue (leu309) of the catalytic subunit of protein phosphatase-2A. Recombinant human LCMT7 protein, fused to His-tag at N-terminus, was expressed in E. coli and purified by using conventional chromatography techniques.

### Amino acid Sequence

<MGSSHHHHHH SGLVPRGSH MGS>MATRQR ESSITSCCST SSCDADDEGV RGTCEDASLC KRFAVSIGYW  
HDPYIQHFVR LSKERKPEI NRGYFARVHG VSQLIKAFRL KTECHCQIVN LGAGMDTTFW RLKDEDLLPS KYFEVDFFPMI

# Recombinant human LCMT1 protein

Catalog Number: ATGP1346

VTRKLHSIKC KPPLSSPILE LHSEDTLQMD GHILDSKRYA VIGADLRDLS ELEEKLLKCN MNTQLPTLLI AECVLVYMTP  
EQSANLLKWA ANSFERAMFI NYEQVNMGDR FGQIMIENLR RRQCDLAGVE TCKSLESQKE RLLSNGWETA SAVDMMELYN  
RLPRAEVSRI ESLEFLDEME LLEQLMRHYC LCWATKGGNE LGLKEITY

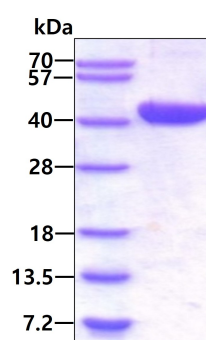
## General References

Lee JA., et al. (2007) J Biol Chem. 282(42):30974-84.

De Baere I., et al. (1999) Biochemistry. 38(50):16539-47.

## DATA

### SDS-PAGE



3ug by SDS-PAGE under reducing condition and visualized by coomassie blue stain