

Recombinant human PSMF1 protein

Catalog Number: ATGP1352

PRODUCT INFORMATION

Expression system

E.coli

Domain

1-271aa

UniProt No.

Q92530

NCBI Accession No.

NP_006805

Alternative Names

Proteasome inhibitor subunit 1 isoform 1, PI31

PRODUCT SPECIFICATION

Molecular Weight

31.9 kDa (291aa) confirmed by MALDI-TOF

Concentration

0.5mg/ml (determined by Bradford assay)

Formulation

Liquid in. 20mM Tris-HCl buffer (pH 8.0) containing 20% glycerol, 1mM DTT,0.1mM PMSF

Purity

> 85% by SDS-PAGE

Tag

His-Tag

Application

SDS-PAGE

Storage Condition

Can be stored at +2C to +8C for 1 week. For long term storage, aliquot and store at -20C to -80C. Avoid repeated freezing and thawing cycles.

BACKGROUND

Description

PSMF1 is a protein that inhibits the activation of the proteasome by the 11S and 19S regulators. The 26S proteasome is a multicatalytic proteinase complex with a highly ordered structure composed of 2 complexes, a 20S core and a 19S regulator. The 20S core is composed of 4 rings of 28 non-identical subunits; 2 rings are composed of 7 alpha subunits and 2 rings are composed of 7 beta subunits. Recombinant human PSMF1 protein, fused to His-tag at N-terminus, was expressed in E. coli and purified by using conventional chromatography.

Recombinant human PSMF1 protein

Catalog Number: ATGP1352

Amino acid Sequence

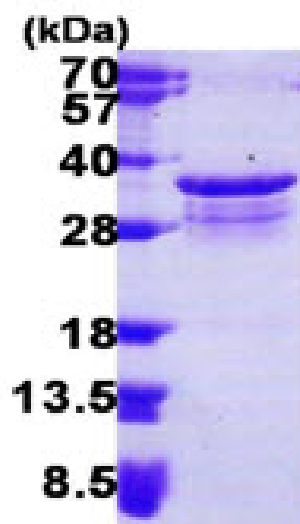
MGSSHHHHHH SSGLVPRGSH MAGLEVL FAS AAPAITCRQD ALVCFLHWEV VTHGYCGLGV GDQPGPNDKK
SELLPAGWNN NKDLYVLRYE YKDGSRKLLV KAITVESSMI LNVLEYGSQQ VADLTNLDD YIDAEHLGDF HRTYKNSEEL
RSRIVSGIIT PIHEQWEKAN VSSPHREFPP ATAREVDPLR IPPHHPHTSR QPPWCDPLGP FVVGGEDLDP FGPRRGGMIV
DPLRSGFPRA LIDPSSGLPN RLPPGAVPPG ARFDPFPGIG TSPPGPNPDH LPPPGYDDMY L

General References

Tanahashi N. et al. (1999) Mol Biol Rep 26: 3-9.
Seeger M. et al. (1997) J. Biol. Chem. 272: 8145-8148.

DATA

SDS-PAGE



3ug by SDS-PAGE under reducing condition and visualized by coomassie blue stain.

15% SDS-PAGE (3ug)