

Recombinant human RAB2B protein

Catalog Number: ATGP1359

PRODUCT INFORMATION

Expression system

E.coli

Domain

1-216aa

UniProt No.

Q8WUD1

NCBI Accession No.

NP_116235

Alternative Names

Ras-related protein Rab-2B, FLJ14824, RAB2B member RAS oncogene family

PRODUCT SPECIFICATION

Molecular Weight

26.8 kDa (240aa) confirmed by MALDI-TOF

Concentration

1mg/ml (determined by Bradford assay)

Formulation

Liquid in. 20mM Tris-HCl buffer (pH 8.0) containing 10% glycerol, 1mM DTT, 0.15M NaCl.

Purity

> 95% by SDS-PAGE

Tag

His-Tag

Application

SDS-PAGE

Storage Condition

Can be stored at +2C to +8C for 1 week. For long term storage, aliquot and store at -20C to -80C. Avoid repeated freezing and thawing cycles.

BACKGROUND

Description

Rab2B belongs to the small GTPase superfamily. Members of the Rab protein family are nontransforming monomeric GTP-binding proteins of the Ras superfamily that contain 4 highly conserved regions involved in GTP binding and hydrolysis. Rab proteins are prenylated, membrane-bound proteins involved in vesicular fusion and trafficking. Recombinant human RAB2B protein, fused to His-tag at N-terminus, was expressed in E. coli and purified by using conventional chromatography techniques.

Recombinant human RAB2B protein

Catalog Number: ATGP1359

Amino acid Sequence

<MGSSHHHHH SSGLVPRGSH MGSH>MTYAYL FKYIIIGDTG VGKSCLLQF TDKRFQPVHD LTIGVEFGAR MVNIDGKQIK
LQIWDTAGQE SFRSITRSYY RGAAGALLVY DITRRETFNH LSWLEDARQ HSSSNMVIML IGNKSDLESR RDVKREEGEA
FAREHGLIFM ETSAKTACNV EAFINTAKE IYRKIQQLF DVHNEANGIK IGPQQSISTS VGPSASQRNS RDIGSNSGCC

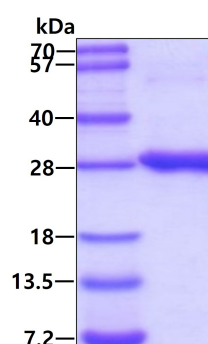
General References

Pfeffer SR., et al. (1992) Trends Cell Biol. 2(2):41-6.

Torti M, et al. (1993) Proc Natl Acad Sci u S A. 90(16):7553-7.

DATA

SDS-PAGE



3 μ g by SDS-PAGE under reducing condition and visualized by coomassie blue stain.