

Recombinant human GIPC2 protein

Catalog Number: ATGP1400

PRODUCT INFORMATION

Expression system

E.coli

Domain

1-315aa

UniProt No.

Q8TF65

NCBI Accession No.

AAH36075

Alternative Names

PDZ domain containing family member 2, PDZ domain containing family, member 2, SEMCAP2

PRODUCT SPECIFICATION

Molecular Weight

36.9 kDa (339aa) confirmed by MALDI-TOF

Concentration

1mg/ml (determined by Bradford assay)

Formulation

Liquid in. 20mM Tris-HCl buffer (pH 8.0) containing 1mM DTT, 30% glycerol, 0.1M NaCl

Purity

> 95% by SDS-PAGE

Tag

His-Tag

Application

SDS-PAGE

Storage Condition

Can be stored at +2C to +8C for 1 week. For long term storage, aliquot and store at -20C to -80C. Avoid repeated freezing and thawing cycles.

BACKGROUND

Description

GIPC2, also known as, SEMCAP2 contains 315 amino acid protein that localizes to the cytoplasm and contains one PDZ domain. GIPC2 is expressed at high levels in kidney and colon and at lower levels in adult liver. It might play important roles in human gastric cancer through modulation of growth factor signaling or cell adhesion. Recombinant human GIPC2 protein, fused to His-tag at N-terminus, was expressed in E. coli and purified by using conventional chromatography techniques.

Recombinant human GIPC2 protein

Catalog Number: ATGP1400

Amino acid Sequence

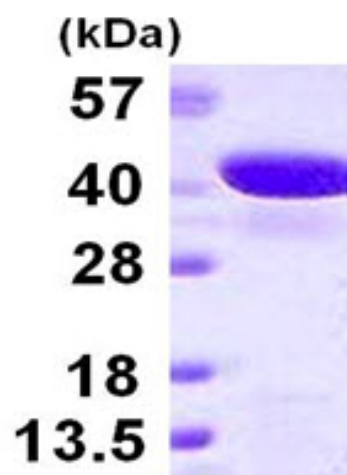
MGSSHHHHHH SSGLVPRGSH MGSHMPLKLR GKAKKAKSKET AGLVEGEPTG AGGGSLASR APARRLVFHA
QLAHGSATGR VEGFSSIQEL YAQIAGAFEI SPSEILYCTL NTPKIDMERL LGGQLGLEDF IFAHVKGIEK EVNVYKSEDS
LGLTITDNGV GYAFIKRIKD GGVIDSVKTI CVGDHIESIN GENIVGWRHY DVAKKLKELK KEELFTMKLI EPKKA FEIEP
RSKAGKSSGE KIGCGRATLR LRSKGPATVE EMPSETKAKA IEKIDDVLEL YMGIRDIDLA TTMFEAGKDK VNPDEFAVAL
DETLGDFAFP DEFVFDVWGV IGDARRGL

General References

Katoh M., et al. (2002) J Mol Med. 9:585-589.
Kirikoshi H., et al. (2002) J Oncol. 20:1183-1187.

DATA

SDS-PAGE



3ug by SDS-PAGE under reducing condition and visualized by coomassie blue stain.

15% SDS-PAGE (3ug)