

Recombinant human CTDSPL protein

Catalog Number: ATGP1408

PRODUCT INFORMATION

Expression system

E.coli

Domain

82-265aa

UniProt No.

O15194

NCBI Accession No.

NP_005799

Alternative Names

CTD small phosphatase-like protein, HYA22, PSR1, RBSP3, SCP3, CTD small phosphatase like protein

PRODUCT SPECIFICATION

Molecular Weight

23.9 kDa (209aa) confirmed by MALDI-TOF

Concentration

0.5mg/ml (determined by Bradford assay)

Formulation

Liquid in. 20mM Tris-HCl buffer (pH 8.0) containing 40% glycerol, 0.15M NaCl, 1mM DTT

Purity

> 90% by SDS-PAGE

Tag

His-Tag

Application

SDS-PAGE

Storage Condition

Can be stored at +2C to +8C for 1 week. For long term storage, aliquot and store at -20C to -80C. Avoid repeated freezing and thawing cycles.

BACKGROUND

Description

CTDSPL, also known as CTD small phosphatase-like protein, preferentially catalyzes the dephosphorylation of 'Ser-5' within the tandem 7 residues repeats in the C-terminal domain (CTD) of the largest RNA polymerase II subunit POLR2A. Recombinant human CTDSPL protein, fused to His-tag at N-terminus, was expressed in E. coli and purified by using conventional chromatography.

Amino acid Sequence

MGSSHHHHHH SGLVPRGSH MGSCHKYLLP EVTVLGYGKK CVVIDLDEL VHSFKPISN ADFIVPEID GTIHQVYVLK

Recombinant human CTDSPL protein

Catalog Number: ATGP1408

RPHVDEFLQR MGQLFECVLF TASLAKYADP VADLLDRWGV FRARLFRESC VFHRGNYVKD LSRLGRELSK VIIVDNSPAS
YIFHPENAVP VQSWFDDMTD TELLDLIPFF EGLSREDDVY SMLHRLCNR

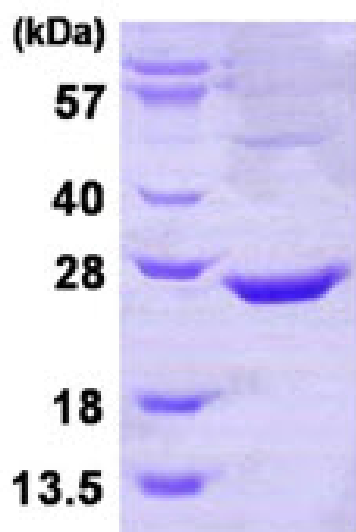
General References

Choudhary C., et al. (2009) *Science*. 325:834-840

Daub H., et al. (2008) *Mol. Cell*. 31:438-448

DATA

SDS-PAGE



3 μ g by SDS-PAGE under reducing condition and visualized by coomassie blue stain.

15% SDS-PAGE (3 μ g)