

Recombinant human NKIRAS1 protein

Catalog Number: ATGP1412

PRODUCT INFORMATION

Expression system

E.coli

Domain

1-192aa

UniProt No.

Q9NYS0

NCBI Accession No.

NP_065078.1

Alternative Names

NF-kappa-B inhibitor-interacting Ras-like protein 1, kappaB-Ras1, KBRAS1

PRODUCT SPECIFICATION

Molecular Weight

23.8 kDa (212aa) confirmed by MALDI-TOF (Molecular weight on SDS-PAGE will appear higher)

Concentration

0.25mg/ml (determined by Bradford assay)

Formulation

Liquid in. 20mM Tris-HCl buffer (pH 8.0) containing 20% glycerol, 1mM DTT

Purity

> 85% by SDS-PAGE

Tag

His-Tag

Application

SDS-PAGE

Storage Condition

Can be stored at +2C to +8C for 1 week. For long term storage, aliquot and store at -20C to -80C. Avoid repeated freezing and thawing cycles.

BACKGROUND

Description

NKIRAS1, also known as NF-kappa-B inhibitor-interacting Ras-like protein 1, belongs to the small GTPase superfamily. NKIRAS1 is atypical Ras-like protein that acts as a potent regulator of NF-kappa-B activity by preventing the degradation of NF-kappa-B inhibitor beta (NFKBIB) by most signals, explaining why NFKBIB is more resistant to degradation. It may act by blocking phosphorylation of NFKBIB and mediating cytoplasmic retention of p65/RELA NF-kappa-B subunit. It is unclear whether it acts as a GTPase. Both GTP- and GDP-bound forms block phosphorylation of NFKBIB. Recombinant human NKIRAS1 protein, fused to His-tag at N-terminus,

Recombinant human NKIRAS1 protein

Catalog Number: ATGP1412

was expressed in E. coli and purified by using conventional chromatography.

Amino acid Sequence

<MGSSHHHHHH SSGLVPRGSH> MGKGCKVVVC GLLSVGKTAI LEQLLYGNHT IGMEDCETME DVYMASVETD
RGVKEQLHLY DTRGLQEGVE LPKHYSFAD GFVLVYSVNN LESFQRVELL KKEIDKFKDK KEVAIVVLGN KIDLSEQRQV
DAEVAQQWAK SEKVRLWEVT VTDRKTLIEP FTLLASKLSQ PQSKSSFPLP GRKNKGNSNS EN

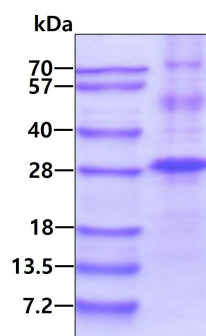
General References

Fenwick C., et al. (2000) Science. 287:869-873

Chen Y., et al. (2003) J. Biol. Chem. 278:23101-23106

DATA

SDS-PAGE



3ug by SDS-PAGE under reducing condition and visualized by coomassie blue stain.