

Recombinant human RRAGC protein

Catalog Number: ATGP1436

PRODUCT INFORMATION

Expression system

E.coli

Domain

1-399aa

UniProt No.

Q9HB90

NCBI Accession No.

NP_071440

Alternative Names

Ras-related GTP binding C, GTR2, RAGC

PRODUCT SPECIFICATION

Molecular Weight

46.7 kDa (423aa) confirmed by MALDI-TOF

Concentration

0.5mg/ml (determined by Bradford assay)

Formulation

Liquid in. 20mM Tris-HCl buffer (pH 8.0) containing 1mM DTT, 10% glycerol, 0.1M NaCl

Purity

> 85% by SDS-PAGE

Tag

His-Tag

Application

SDS-PAGE

Storage Condition

Can be stored at +2C to +8C for 1 week. For long term storage, aliquot and store at -20C to -80C. Avoid repeated freezing and thawing cycles.

BACKGROUND

Description

Ras-related GTP binding C, also known as RRAGC, is a monomeric guanine nucleotide-binding protein, or G protein. By binding GTP or GDP, small G proteins act as molecular switches in numerous cell processes and signaling pathways. RRAGC has intrinsic GTPase activity. It also regulates the organization of the actin cytoskeleton. Recombinant human RRAGC protein, fused to His-tag at N-terminus, was expressed in E. coli and purified by using conventional chromatography techniques.

Recombinant human RRAGC protein

Catalog Number: ATGP1436

Amino acid Sequence

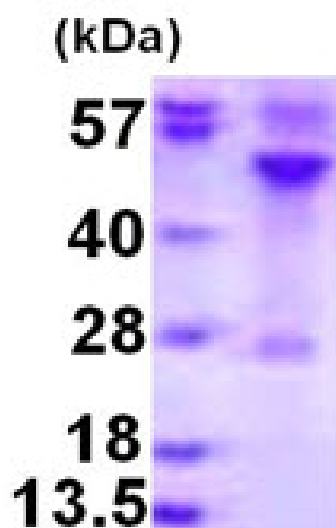
MGSSHHHHHH SSGLVPRGSH MGSMSLQYG AEETPLAGSY GAADSFPKDF GYGVEEEEE AAAAGGGVGA
GAGGGCGPGG ADSSKPRILL MGLRRSGKSS IQKVVFKMS PNETLFLEST NKIYKDDISN SSFVNFQIWD FPGQMDFFDP
TFDYEMIFRG TGALIYVIDA QDDYMEALTR LHITVSKAYK VNPDMNFEVF IHKVDGLSDD HKIETQRDIH QRANDDLADA
GLEKLHLSFY LTSIYDHSIF EAFSKVVQKL IPQLPTLENL LNIFISNSGI EKAFLFDVVS KIIATDSSP VDMQSYELCC
DMIDVVIDVS CIYGLKEDGS GSAYDKESMA IIKLNNTTVL YLKEVTKFLA LVCILREESF ERKGLIDYNF HCFRKAHEV
FEVGVTSHRG CGHQTSASSL KALTHNGTPR NAI

General References

Sekiquchi T., et al. (2001) J Biol Chem. 276:7246-57.
Sekiquchi T., et al. (2004) J Biol Chem. 279:8343-50.

DATA

SDS-PAGE



3ug by SDS-PAGE under reducing condition and visualized by coomassie blue stain.

15% SDS-PAGE (3ug)