

Recombinant human CMT2/MAD2L1BP protein

Catalog Number: ATGP1441

PRODUCT INFORMATION

Expression system

E.coli

Domain

1-274aa

UniProt No.

Q15013

NCBI Accession No.

NP_055443.1

Alternative Names

MAD2L1-binding protein, CMT2

PRODUCT SPECIFICATION

Molecular Weight

33.6 kDa (298aa) confirmed by MALDI-TOF (Molecular weight on SDS-PAGE will appear higher)

Concentration

0.5mg/ml (determined by Bradford assay)

Formulation

Liquid in. 20mM Tris-HCl buffer (pH 8.0) containing 1mM DTT, 20% glycerol, 100mM NaCl

Purity

> 90% by SDS-PAGE

Tag

His-Tag

Application

SDS-PAGE

Storage Condition

Can be stored at +2C to +8C for 1 week. For long term storage, aliquot and store at -20C to -80C. Avoid repeated freezing and thawing cycles.

BACKGROUND

Description

MAD2L1-binding protein, also known as MAD2L1BP, belongs to the MAD2L1BP family. This protein may function to silence the spindle checkpoint and allow mitosis to proceed through anaphase by binding MAD2L1 after it has become dissociated from the MAD2L1-CDC20 complex. Recombinant human MAD2L1BP protein, fused to His-tag at N-terminus, was expressed in E. coli and purified by using conventional chromatography techniques.

Amino acid Sequence

<MGSSHHHHHH SGLVPRGSH MGS>HMAAPEA EVLSSAAVPD LEWYEKSEET HASQIELLET SSTQEPLNAS

Recombinant human CMT2/MAD2L1BP protein

Catalog Number: ATGP1441

EAF CPRDCMV PVVFP GPVVSQ EGCCQFTCEL LKHIMYQRQQ LPLPYEQLKH FYRKPSPQAE EMLKKKPRAT TEVSSRKCQQ
ALAELESVLS HLEDFFARTL VPRVLILLGG NALSPKEFYE LDLSLLAPYS VDQSLSTAAC LRRLFRAIFM ADAFSELQAP
PLMGTVVMAQ GHRNCGEDWF RPKLNRYVPS RGHKLTVTLS CGRPSIRTTA WEDIWVFQAP VTFKGFRE

General References

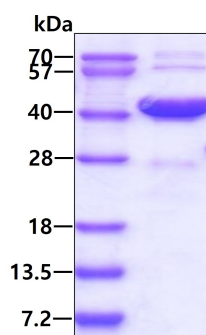
Habu T, et al. (2002). EMBO J. 21(23): 6419-28.

Howell BJ, et al. (2000) J Cell Biol. 18

150(6):1233-50.

DATA

SDS-PAGE



3ug by SDS-PAGE under reducing condition and visualized by coomassie blue stain.