

Recombinant human SAT2 protein

Catalog Number: ATGP1445

PRODUCT INFORMATION

Expression system

E.coli

Domain

1-170aa

UniProt No.

Q96F10

NCBI Accession No.

NP_597998.1

Alternative Names

Diamine acetyltransferase 2, SSAT2

PRODUCT SPECIFICATION

Molecular Weight

21.0 kDa (190aa) confirmed by MALDI-TOF

Concentration

1mg/ml (determined by Bradford assay)

Formulation

Liquid in. 20mM Tris-HCl buffer (pH 8.0) containing 10% glycerol

Purity

> 95% by SDS-PAGE

Tag

His-Tag

Application

SDS-PAGE

Storage Condition

Can be stored at +2C to +8C for 1 week. For long term storage, aliquot and store at -20C to -80C. Avoid repeated freezing and thawing cycles.

BACKGROUND

Description

SAT2, also known as diamine acetyltransferase 2, is an enzyme that catalyzes the acetylation of polyamines (Acetyl-CoA + an alkane-alpha, omega-diamine = CoA + an N-acetyldiamine). Recombinant human SAT2 protein, fused to His-tag at N-terminus, was expressed in E. coli and purified by using conventional chromatography techniques.

Amino acid Sequence

<MGSSHHHHHH SGLVPRGSH> MASVRIREAK EGDCGDILRL IRELAEFEKL SDQVKISEEA LRADGFGDNP FYHCLVAEIL

Recombinant human SAT2 protein

Catalog Number: ATGP1445

PAPGKLLGPC VVGYGIIYFI YSTWKGRTIY LEDIYVMPEY RGQGIGSKII KKVAEVALDK GCSQFRLAVL DWNQRAMDLY
KALGAQDLTE AEGWHFFCFQ GEATRKLAKG

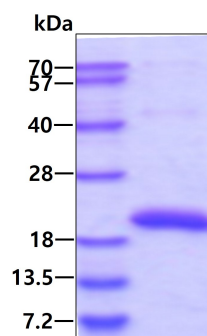
General References

Guey,L.T. et al. (2010) Eur. urol. 57 (2), 283-292

Hosgood,H.D. III et al. (2009) Respir Med 103 (12), 1866-1870

DATA

SDS-PAGE



3 μ g by SDS-PAGE under reducing condition and visualized by coomassie blue stain.