

Recombinant human CARD18 protein

Catalog Number: ATGP1460

PRODUCT INFORMATION

Expression system

E.coli

Domain

1-90aa

UniProt No.

P57730

NCBI Accession No.

NP_067546

Alternative Names

Caspase recruitment domain-containing protein 18, ICEBERG, pseudo-ICE, uNQ5804

PRODUCT SPECIFICATION

Molecular Weight

12.3 kDa (110aa) confirmed by MALDI-TOF

Concentration

0.5mg/ml (determined by Bradford assay)

Formulation

Liquid in. 20mM Tris-HCl buffer (pH 8.0) containing 1mM DTT,10% glycerol, 0.1M NaCl

Purity

> 95% by SDS-PAGE

Tag

His-Tag

Application

SDS-PAGE

Storage Condition

Can be stored at +2C to +8C for 1 week. For long term storage, aliquot and store at -20C to -80C. Avoid repeated freezing and thawing cycles.

BACKGROUND

Description

Caspase recruitment domain-containing protein 18, also known as CARD18, is a member of the death-domain-fold superfamily that is induced by proinflammatory stimuli. It consists essentially only of a CARD, inhibits generation of IL-1b by interacting with caspase-1 and preventing association with RIP 2. The association of CARD18 with caspase-1 is facilitated by the charge-charge interactions between the prodomain of caspase-1 and the surface charge of CARD18. Recombinant human CARD18 protein, fused to His-tag at N-terminus, was expressed in E. coli and purified by using conventional chromatography techniques.

Recombinant human CARD18 protein

Catalog Number: ATGP1460

Amino acid Sequence

MGSSHHHHHH SSSLVPRGSH MADQLLRKKR RIFIHSVGAG TINALLDCLL EDEVISQEDM NKVRDENDTV MDKARVLIDL
VTGKGPKSCC KFIKHLCEED PQLASKMGLH

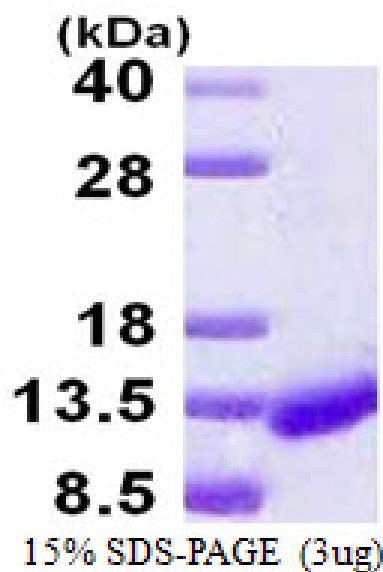
General References

Humke E W., et al. (2000) Cell. 103:99-111.

Watson R W., et al. (1998) J Immunol. 161:957-962

DATA

SDS-PAGE



3ug by SDS-PAGE under reducing condition and visualized by coomassie blue stain.