

Recombinant *M. tuberculosis* ESAT6 protein

Catalog Number: ATGP1480

PRODUCT INFORMATION

Expression system

Baculovirus

Domain

1-95aa

UniProt No.

P9WNK6

NCBI Accession No.

NP_338543.1

Alternative Names

Early secretory antigenic target 6 kDa, esxA, esaT6

PRODUCT SPECIFICATION

Molecular Weight

11 kDa (104aa)

Concentration

0.5mg/ml (determined by BCA assay)

Formulation

Liquid in. 20mM Tris-HCl buffer (pH 8.0) containing, 10% glycerol

Purity

> 90% by SDS-PAGE

Endotoxin level

< 1 EU per 1ug of protein (determined by LAL method)

Tag

His-Tag

Application

SDS-PAGE

Storage Condition

Can be stored at +2C to +8C for 1 week. For long term storage, aliquot and store at -20C to -80C. Avoid repeated freezing and thawing cycles.

BACKGROUND

Description

ESAT6, the 6 kDa early secretory antigenic target of *Mycobacterium tuberculosis*, is a secretory protein and potent T cell antigen. ESAT6 has been shown to directly bind to the TLR2 receptor, inhibiting downstream signal transduction. Recently it was shown that ESAT6 is very potential as diagnostic for differentiation between the mycobacterial infection and BCG vaccination. Recombinant *Mycobacterium tuberculosis* CDC1551 ESAT6 protein,

Recombinant *M. tuberculosis* ESAT6 protein

Catalog Number: ATGP1480

fused to His-tag at C-terminus, was expressed in Baculovirus and purified by using conventional chromatography techniques.

Amino acid Sequence

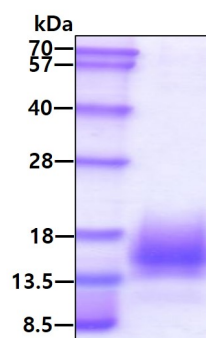
<ADP>MTEQQWN FAGIEAAASA IQGNVTSIHS LLDEGKQSLT KLAAAWGGSG SEAYQGVQK WDATATELNN
ALQNLARTIS EAGQAMASTE GNVTGMFA<HH HHHH>

General References

Pathak SK., et al. (2007) Natl Immunol. 8(6):610-8.
Matveeva NA., et al. (2011) Tsiol Genet. 45(1):11-7.

DATA

SDS-PAGE



3 μ g by SDS-PAGE under reducing condition and visualized by coomassie blue stain