

Recombinant human ATOH1 protein

Catalog Number: ATGP1485

PRODUCT INFORMATION

Expression system

E.coli

Domain

158-354aa

UniProt No.

Q92858

NCBI Accession No.

NP_005163

Alternative Names

Protein atonal homolog 1, ATH1, bHLHa14, HATH1, MATH-1

PRODUCT SPECIFICATION

Molecular Weight

21.3 kDa (198aa)

Concentration

1mg/ml (determined by Bradford assay)

Formulation

Liquid in. 20mM Tris-HCl buffer (pH 8.0) containing 10% glycerol, 0.4M urea

Purity

> 85% by SDS-PAGE

Tag

Non-Tagged

Application

SDS-PAGE

Storage Condition

Can be stored at +2C to +8C for 1 week. For long term storage, aliquot and store at -20C to -80C. Avoid repeated freezing and thawing cycles.

BACKGROUND

Description

ATOH1, also known as protein atonal homolog 1, activates E box-dependent transcription in collaboration with TCF3/E47, but the activity is completely antagonized by the negative regulator of neurogenesis HES1. This protein may play a role in the differentiation of subsets of neural cells by activating E box-dependent transcription. Recombinant human ATOH1 protein was expressed in E. coli.

Amino acid Sequence

MKQRRLAANA RERRRMHGLN HAFDQLRNVI PSFNNDKKLS KYETLQMAQI YINALSELLQ TPSGGEQPPP PPASCKSDHH

Recombinant human ATOH1 protein

Catalog Number: ATGP1485

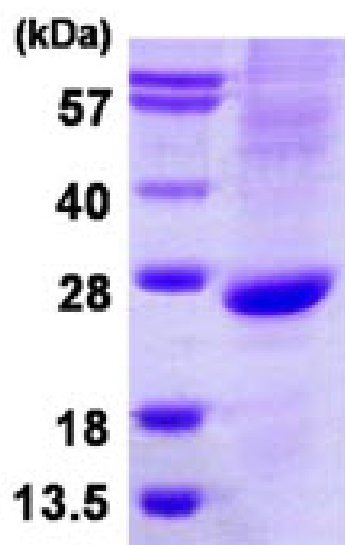
HLRТАASYEG GAGNATAAGA QQASGGSQRP TPPGSCRTRF SAPASAGGYS VQLDALHFST FEDSALTAMM AQKNLSPSLP
GSILQPVQEE NSKTSPRSHR SDGEFSPHSH YSDSDEAS

General References

Ben-Arie N., et al. (1996) Hum. Mol. Genet. 5:1207-1216
The MGC Project Team (2004) Genome Res. 14:2121-2127

DATA

SDS-PAGE



3ug by SDS-PAGE under reducing condition and visualized by coomassie blue stain.

15% SDS-PAGE (3ug)