

# Recombinant mouse PGAM1 protein

Catalog Number: ATGP1496

## PRODUCT INFORMATION

---

### Expression system

E.coli

### Domain

1-254aa

### UniProt No.

Q9DBJ1

### NCBI Accession No.

NP\_075907

### Alternative Names

Phosphoglycerate mutase 1, 2310050F24Rik, Pgam-1

## PRODUCT SPECIFICATION

---

### Molecular Weight

31.4 kDa (278aa) confirmed by MALDI-TOF

### Concentration

1mg/ml (determined by Bradford assay)

### Formulation

Liquid in. 20mM Tris-HCl buffer (pH 8.0) containing 20% glycerol, 0.1M NaCl, 1mM DTT

### Purity

> 95% by SDS-PAGE

### Tag

His-Tag

### Application

SDS-PAGE

### Storage Condition

Can be stored at +2C to +8C for 1 week. For long term storage, aliquot and store at -20C to -80C. Avoid repeated freezing and thawing cycles.

## BACKGROUND

---

### Description

PGAM1 belongs to the phosphoglycerate mutase family. This protein is important components of glucose and 2, 3-BPGA (2, 3-bisphosphoglycerate) metabolism and catalyzes the reversible reaction of 3-phosphoglycerate (3-PGA) to 2-phosphoglycerate (2-PGA) in the glycolytic pathway. The PGAM is a dimeric enzyme containing, in different tissues, different proportions of a slow-migrating muscle (MM) isozyme, a fast-migrating brain (BB) isozyme, and a hybrid form (MB). Recombinant mouse PGAM1 protein, fused to His-tag at N-terminus, was expressed in E. coli and purified by using conventional chromatography.

## Recombinant mouse PGAM1 protein

Catalog Number: ATGP1496

### Amino acid Sequence

MGSSHHHHHH SSGLVPRGSH MGSHEMAAYKL VLIRHGESAW NLENRFSGWY DADLSPAGHE EAKRGGQALR  
DAGYEFDICF TSVQKRAIRT LWTVLDAIDQ MWLPVVRTWR LNERHYGGLT GLNKAETAAK HGEAQVKIWR RSYDVPPPPM  
EPDHPFYSNI SKDRRYADLT EDQLPSCESL KDTIARALPF WNEEIVPQIK EGKRVLIAAH GNSLRGIVKH LEGLSEEAIM  
ELNLPTGIPI VYELDKNLKP IKPMQFLGDE ETVRKAMEAV AAQGKVKK

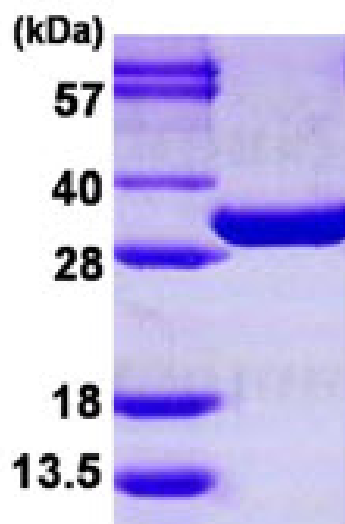
### General References

Cao L., et al. (2007) J. Immunol. 179:5864-5876

Ballif B.A., et al. (2008) J. Proteome Res. 7:311-318

## DATA

### SDS-PAGE



3ug by SDS-PAGE under reducing condition and visualized by coomassie blue stain.

15% SDS-PAGE (3ug)