

# Recombinant human 4-1BB/CD137/TNFRSF9 protein

Catalog Number: ATGP1522

## PRODUCT INFORMATION

---

**Expression system**

E.coli

**Domain**

18-186aa

**UniProt No.**

Q07011

**NCBI Accession No.**

NP\_001552

**Alternative Names**

Tumor necrosis factor receptor superfamily member 9, 4-1BB ligand receptor, CDw137, T-cell antigen 4-1BB homolog, T-cell antigen ILA, CD137

## PRODUCT SPECIFICATION

---

**Molecular Weight**

20 kDa (193aa) confirmed by MALDI-TOF

**Concentration**

0.5mg/ml (determined by Bradford assay)

**Formulation**

Liquid in. 20mM Tris-HCl buffer (pH 8.0) containing 0.1M NaCl, 10% glycerol, 1mM DTT

**Purity**

&gt; 90% by SDS-PAGE

**Tag**

His-Tag

**Application**

SDS-PAGE

**Storage Condition**

Can be stored at +2C to +8C for 1 week. For long term storage, aliquot and store at -20C to -80C. Avoid repeated freezing and thawing cycles.

## BACKGROUND

---

**Description**

TNFRSF9, also known as CD137 or ILA, is a member of the TNF superfamily of receptors. This protein is mainly expressed on the surface of a variety of T cells, but also found in B cells, monocytes, and various transformed cell lines. TNFRSF9 is expressed on activated T cells and binds an inducible ligand that is found on B cells, macrophages and dendritic cells. Recombinant human TNFRSF9 protein, fused to His-tag at N-terminus, was expressed in E. coli and purified by using conventional chromatography techniques.

# Recombinant human 4-1BB/CD137/TNFRSF9 protein

Catalog Number: ATGP1522

## Amino acid Sequence

MGSSHHHHHH SSGLVPRGSH MGSMFERTRS LQDPCSNCPA GTFCDNNRNQ ICSPCPPNSF SSAGGQRTCD  
ICRQCKGVFR TRKECSSTSN AECDCTPGFH CLGAGCSMCE QDCKQGQELT KKGCKDCCFG TFNDQKRGIC RPWTNCSLDG  
KSVLVNGTKE RDVVCGPSPA DLSPGASSVT PPAPAREPGH SPQ

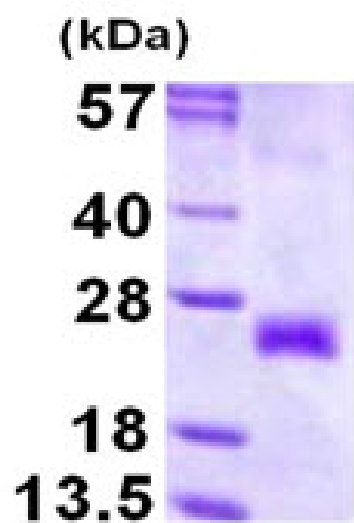
## General References

Langstein J., et al. (2000) Biochem Biophys Res. 273:117-122.  
Kienzle G., et al. (2000) Int. Immunol. 12: 73-82.

## DATA

### SDS-PAGE

3ug by SDS-PAGE under reducing condition and visualized by coomassie blue stain.



15% SDS-PAGE (3ug)